

Fluke SmartView™ IR analysis and reporting software

For the Ti4x and Ti5x Series IR Flexcam Thermal Imagers

Fluke SmartView software is included with each Fluke IR FlexCam® Thermal Imager. This powerful software is a modular suite of tools that annotates, views, edits and analyzes IR images. It also generates fully customizable and professional-looking reports in a few easy steps. The IR-Fusion technology is fully supported. The software is easy to use for maintenance personnel, yet delivers the performance specialized thermographers require for advanced analysis.

Image viewing and editing

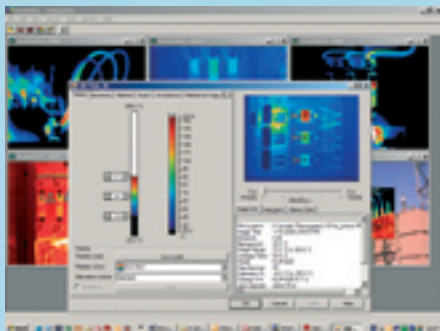
- Displays an array of open images for convenient selection and analysis
- A simple mouse click displays the temperature at any given point
- Color palettes, reference images, markers and emissivity can be edited

Extensive annotation possibilities

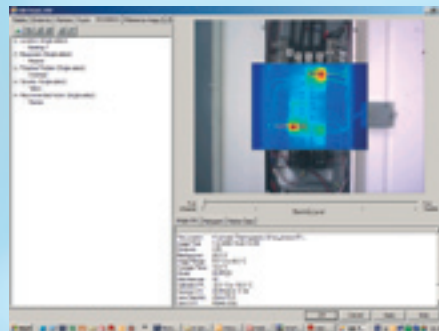
- Add annotations to images in the camera or in the PC software
- Input information such as locations, category and other notes
- Reference images can be linked together for good/bad and before/after analysis
- Annotations can be included in reports

Detailed analysis and total image control

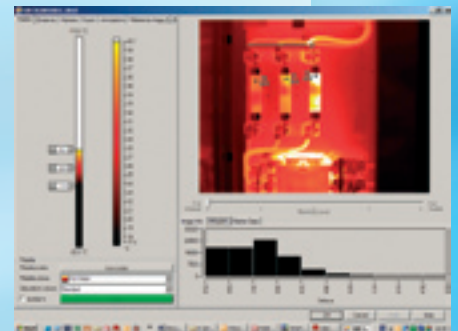
- Alter emissivity and background temperature to enhance contrast or display detail more effectively
- A complete set of marker tools are provided (Hot, Cold, Center Point, Center Box, etc.)
- Five viewing modes enable image optimization based on application needs (IR-Fusion models only)



Navigate, analyze and enhance IR images



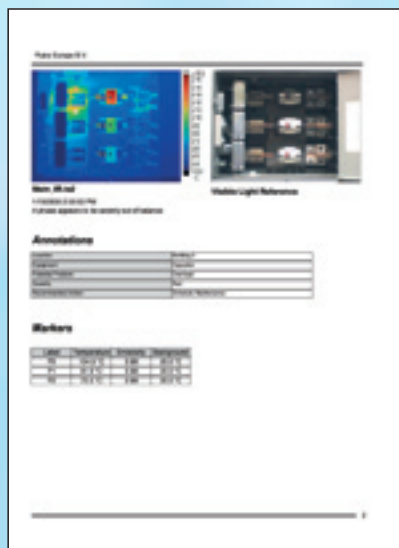
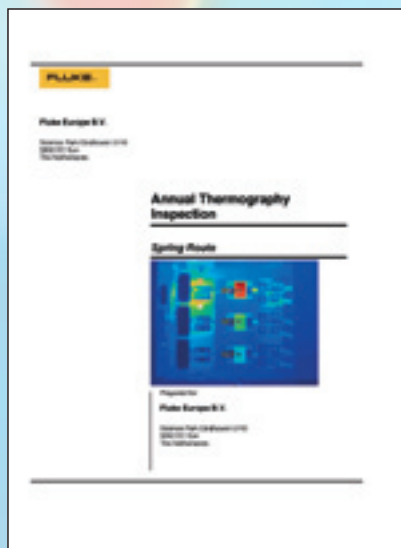
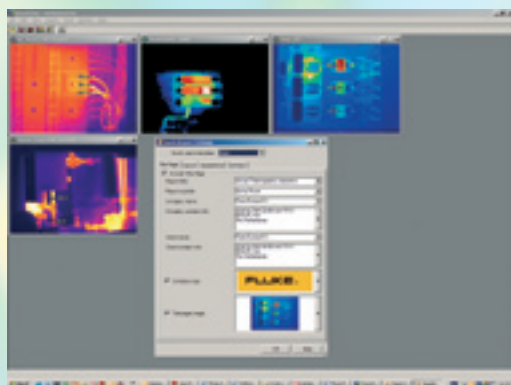
Organize data with extensive annotations



Optimize images and quickly reveal issues

Simplified report generation

- Generate professional customized reports fast
- One-click report generation for a quick result
- Choice of features including before/after, IR plus visible light, annotations, supporting data and graphics
- Report wizard guides the user through report generation



System requirements

- Windows® 98SE/ME/NT4/2000/XP
- A web browser for product registration. Internet Explorer 5.0 or newer or Netscape® 5.0 or newer
- CompactFlash memory card reader
- 20 MB available disk space, not counting space requirements for web browser
- 16-bit color, 800 x 600 resolution video or better'
- Color printer for printing the images
- CR-ROM drive (for installing SmartView software)

Fluke. *Keeping your world up and running.™*

Fluke Corporation
PO Box 9090, Everett, WA USA 98206

Fluke Europe B.V.
PO Box 1186, 5602 BD
Eindhoven, The Netherlands

For more information call:
In the U.S.A. (800) 443-5853 or
Fax (425) 446-5116
In Europe/M-East/Africa +31 (0) 40 2675 200 or
Fax +31 (0) 40 2675 222
In Canada (800)-36-FLUKE or
Fax (905) 890-6866
From other countries +1 (425) 446-5500 or
Fax +1 (425) 446-5116
Web access: <http://www.fluke.com>

©2006 Fluke Corporation. All rights reserved.
Printed in U.S.A. 5/2006 2687779 D-US-N Rev A