



FLUKE®

IR-Fusion™ Technology

Infrared and visible light images fused together on one display

IR-Fusion Technology captures a visible light image in addition to the infrared image and takes the mystery out of IR image analysis. It helps to better identify and report suspect components and enable the repair to be done right the first time.

5 viewing modes

Full IR – For troubleshooting and analyzing equipment and installations with very high resolution IR imaging. For detecting the smallest temperature variations to track down the origin of problems and fully document the extent of remediation. Full IR images are automatically linked to full visible light images.

Picture-in-Picture – For creating an IR ‘window’ surrounded by a visible light frame to easily identify thermal anomalies, while maintaining a frame of reference with surroundings.

Alpha Blending – For combining visible and infrared images together in any ratio to create a single image with enhanced detail that will help in precisely locating problems.

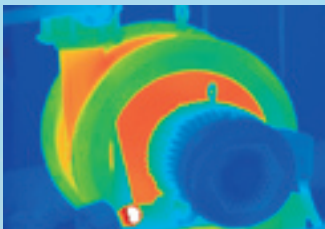
IR/Visible Alarm – For displaying only temperatures that fall above, below, or in between a specified range as IR image, leaving the rest of the scene as a fully visible light image (Ti55FT and T145FT models only).

Full Visible Light – A bright, detailed pixel-for-pixel reference image of subject areas for documentation and reporting.

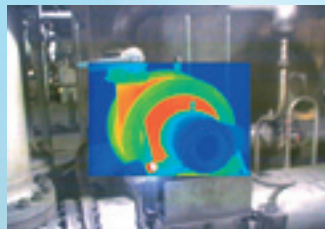


See things both ways

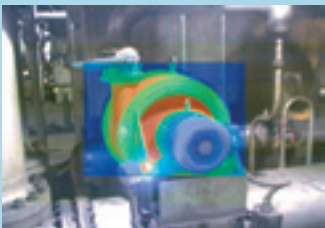
To communicate critical information, infrared images only are no longer enough. With revolutionary IR-Fusion technology, one can better identify details, manage and analyze images by combining both the infrared and visible light images. IR-Fusion technology simultaneously captures pixel-for-pixel infrared and visible light images and allows full image optimization with 5 different on-camera as well as software viewing modes. With the integrated laser pointer visible on the images, precise and accurate (faulty) component identification is very easy. All FT models of the Fluke IR FlexCam Thermal Imagers feature this unique technology. (The Fluke Ti40FT only supports Picture-in-Picture mode.) Moreover it is available as an option.



Full IR



Picture in Picture



Alpha Blending



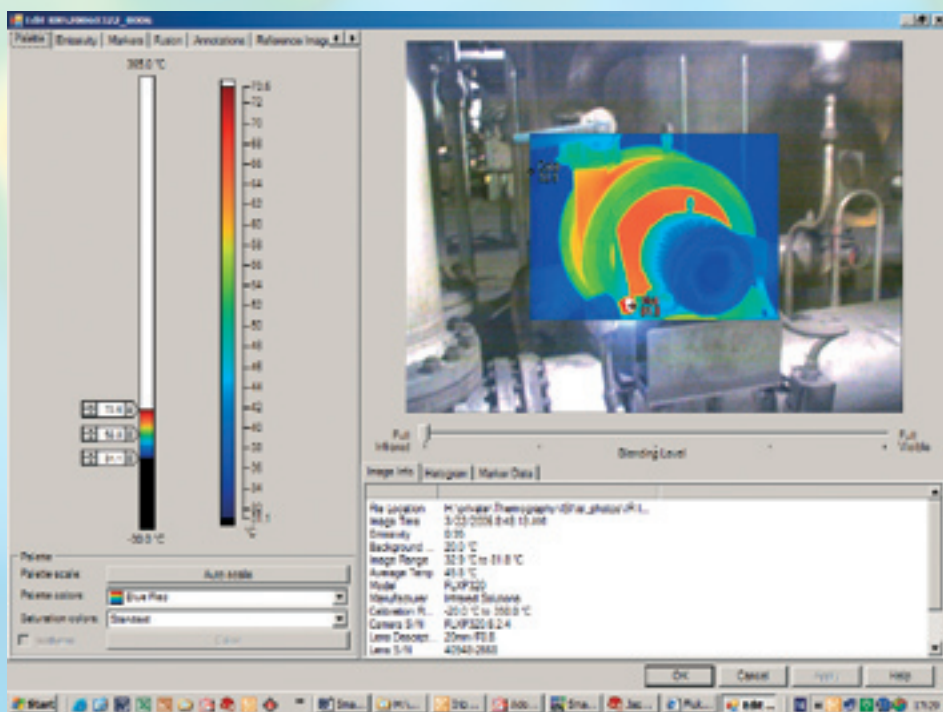
IR/Visible Alarm



Full Visible Light

Automated reporting and powerful control

The real power behind IR-Fusion is the SmartView™ software. Capture and annotate hundreds of corresponding visible and infrared images in the field and quickly import them into the SmartView suite. Here, the images can be optimized for maximum communication value—adjusting imagery within IR-Fusion's five display modes—perform sophisticated analysis, and produce professional reports quickly and easily. SmartView's comprehensive reporting tools are fully customizable.



Visible light camera specifications

Pixels	1.3M
Active pixels	1280H x 1024V
Field of view	54.23H x 43.46V
Sensitivity	1 lux
Focus distance	30 cm to infinity
Exposure	Automatic
Integrated flash	Manual or default
Torch light mode	For enhances video imaging in dark environments

Fluke. *Keeping your world up and running.™*

Fluke Corporation
PO Box 9090, Everett, WA USA 98206

Fluke Europe B.V.
PO Box 1186, 5602 BD
Eindhoven, The Netherlands

For more information call:
In the U.S.A. (800) 443-5853 or
Fax (425) 446-5116
In Europe/M-East/Africa +31 (0) 40 2675 200 or
Fax +31 (0) 40 2675 222
In Canada (800)-36-FLUKE or
Fax (905) 890-6866
From other countries +1 (425) 446-5500 or
Fax +1 (425) 446-5116
Web access: <http://www.fluke.com>

©2006 Fluke Corporation. All rights reserved.
Printed in U.S.A. 5/2006 2687807 D-US-N Rev A