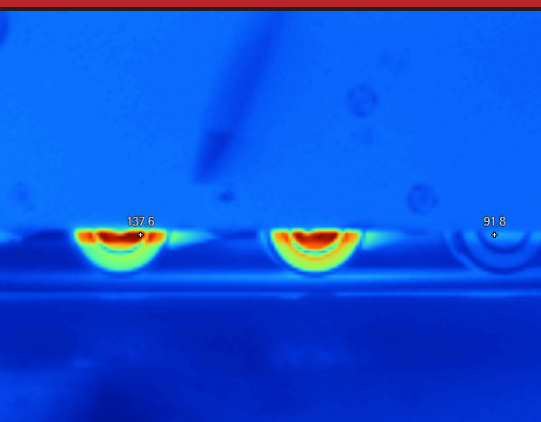




Boost reliability with infrared in food and beverage



By comparing similar bearings, infrared easily spots where there is a problem. In this case, two bearings on these rollers are nearing failure, which could shut this line down.

Keep production on schedule

Downtime is not an option. Performing quick infrared spot checks can uncover potential failures before they happen, allowing you to make repairs when it's convenient. Keep the line moving by frequently scanning critical equipment and troubleshooting in seconds. Whether it's pumps, conveyors or electrical connections, Fluke thermal imagers help ensure uninterrupted production.



Troubleshoot faster

Looking for a quicker and easier way to troubleshoot? Traditional troubleshooting using trial and error can be effective but is time consuming and costly. Let's face it; pinpointing an issue within a mass of sprawling production lines is no quick task. And in this industry, every second is expensive. Let the varying temperatures of components tell the story. Narrow down and rule out possible problem causes faster by seeing the whole picture with infrared. Next time production raises an issue with the line, reach for infrared first...and skip the headache.

Exploit the versatility of infrared

Equipment cost has historically forced plant managers to outsource annual infrared inspections, and in many cases, limit the scope of work. Annual scans certainly uncover problems, but leave you hoping for the best until next year. Food and beverage production demands reliability, so yearly spot checks just aren't enough. With the line of high performance and affordable thermal imagers from Fluke, it's now possible to have this versatile tool on-site. Take advantage of the year-round versatility by troubleshooting and monitoring:

- **Transformers, switches, disconnects and MCCs**
- **Pumps, motors and compressors**
- **Valve operation**
- **Tank and sludge levels**
- **Level control performance**
- **Pipe blockages and integrity**
- **Operating temperature**
- **Conveyors and roller bearings**
- **Boilers and chillers**
- **HVACR**
- **Roof moisture, air leaks and insulation issues**



Fluke Ti25

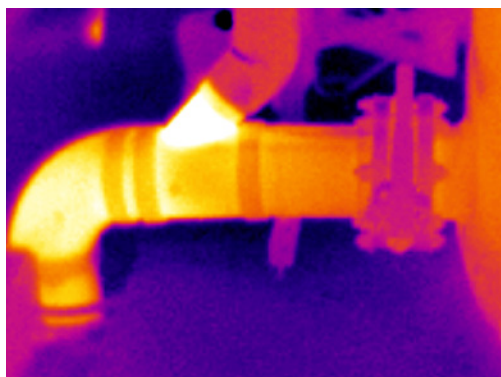
Fluke Ti32

Quick tips:

Performing successful IR inspections

- 1. Ensure consistent frequency:**
Above and beyond troubleshooting, infrared inspections of all major components and connections should be performed at least bi-annually.
- 2. Adjust for emissivity:**
Components and materials emit their energy differently. For accurate findings, ensure you are using the proper emissivity setting for the material you are inspecting. Also, consider altering the surface by adding tape or paint to increase emissivity.
- 3. Perform qualitative measurements:**
Compare your findings with similar components and connections under similar conditions to reveal thermal anomalies.
- 4. Ensure safety during inspection:**
Beyond electrical safety, be careful not to neglect your surroundings while performing infrared inspections. Focusing too heavily on the thermal imager can take your mind away from rotating, cutting, or other dangerous equipment.

In addition to the standard electrical panel inspections, infrared can be used to evaluate pipe integrity, proper flow and build-up. In this case, the abrasive material in the pipe has started to erode the pipe wall at the elbow joint.



Fluke makes rugged, reliable tools you can trust.

Need to see to believe? Watch this video of Fluke thermal imagers being put to the test.

www.fluke.com/rugged



Training and other resources

For training on electrical, mechanical and process inspections with thermal imagers, visit www.fluke.com/titraining for webinars, application notes and advanced training.

Industry associations and standards:

Grocery Manufacturers Association–
www.gmaonline.org

National Grocers Association–
www.nationalgrocers.org

ASTM E1934–Standard Guide for Examining Electrical and Mechanical Equipment with Infrared Thermography

Experience the Fluke advantage!

Call us today to schedule a demo or test drive at **1-800-760-4523**.
M-F 8:00 AM to 6:00 PM CST

Or to chat LIVE with a sales representative, visit www.fluke.com/thermography and click “Start Chat”.

Fluke. Not just infrared. Infrared you can use.™

Fluke IR windows

- Increase safety by reducing the risk of arc flash and serious injury
- Inspect more locations in less time

