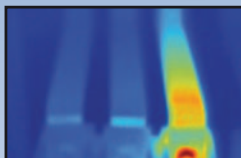


Applications

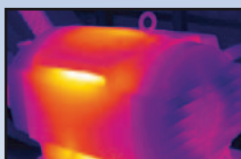
Temperature changes can indicate problems in many areas you see everyday, including:

Electrical distribution and service

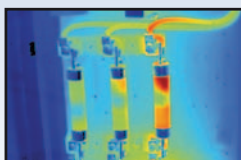
- Switch gear
- Panels
- Controls
- Fuses
- Transformers
- Receptacles
- Lighting
- Conductors
- Bus bars
- Motor control centers



Bus bar connection



Verify after repair



Hot fuse

Mechanical

- Motors
- Bearings
- Pumps
- Gear boxes
- Drive belts

FLUKE®

Specifications

	Ti9
Detector size	160 x 120
Thermal sensitivity (NETD)	≤0.2 °C at 30 °C (200 mK)
Field of View (FOV)	23 ° x 17 °
Minimum focus distance	15 cm
Temperature range	-20 °C to +250 °C (-4 °F to +482 °F)

For full specifications go to www.fluke.com/ti9

Includes everything you need to get started:

SmartView® analysis and reporting software, 2 GB SD card, SD card reader, hard and soft carrying case, hand strap, rechargeable battery, AC charger/power supply, training DVD.



Ordering information

Fluke Ti9 Thermal Imager

Try the virtual demo on the web
www.fluke.com/ti9virtualdemo



For more information,
visit www.fluke.com/ti9

Fluke. Not just infrared.
Infrared you can use.™

©2011 Fluke Corporation. Specifications subject to change without notice. 7/2011 4091672A

Modification of this document is not permitted without written permission from Fluke Corporation.

FLUKE®

\$2495

Fluke Ti9 Thermal Imager

The rugged and affordable basic thermal imager for electricians and technicians



Get the full picture

Fluke has now provided electricians and technicians with the perfect solution to get the full picture quickly and easily with the right features at an affordable price. If cost was a barrier before, its not any longer.

Find the hot spots instantly

- Superior resolution to view more essential details
- Small details are visible in a perfectly focused image
- Large widescreen full VGA color LCD display
- Temperature range supports basic electrical and mechanical applications

Easy to use

- Intuitive, three-button menu, simply navigate with the push of a thumb
- Adjustable focus
- Just point, shoot and the image is captured.
It is that easy.

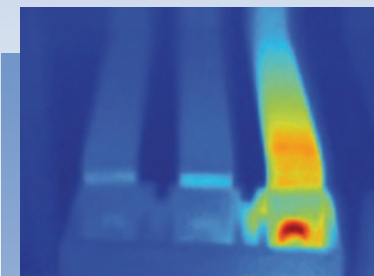
Rugged

- Withstands dust and water, IP54 rating
- Withstands a drop test of 2 meters
- Protective lens cover

FLUKE®



- Point
- Pull the trigger
- Get the full picture



Try the virtual demo on the web
www.fluke.com/ti9virtualdemo