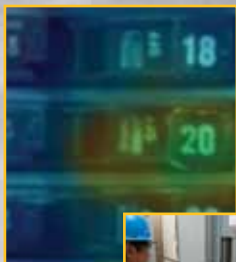


## KEY APPLICATIONS

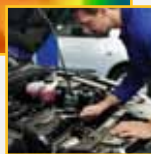
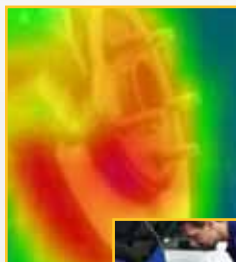
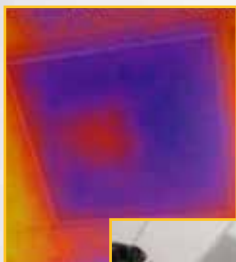


### Electrical

- Electrical panels and wiring
- Fuses and insulators
- Switch gear

### Industrial maintenance

- Motors, pumps, bearings and windings
- Belts and drive shafts
- Steam traps



### HVAC/R

- Ducts, grills and diffusers
- Heating and cooling systems
- Bearing components
- Pipes

### Automotive

- Brakes
- Condensers
- Wiring, bearings, exhaust systems and manifolds
- Hydraulics, compressors and seals

## 2 EXCITING MODELS

	VT02	VT04
Built-in digital camera	Yes	
Infrared heat map overlay	Yes (five blending modes)	
Image optics system	PyroBlend™ optic	PyroBlend™ Plus optic, 4 x sharper image
Center-point temperature measurement	Yes	
Field of view	20° x 20°	28° x 28°
Battery	4 AA batteries (8 hours)	Li-Ion rechargeable battery (8 hours)
Temperature alarms	—	Yes
Temperature range	-10 °C to +250 °C	
Temperature measurement accuracy	± 2 °C or ± 2 %	
Compact and focus free	Yes – no training required	
SD card (4 GB included)	Yes – 10,000 images per GB	
Professional reporting SmartView® software	Free download from Fluke website. <a href="http://www.fluke.com/vtsmartview">www.fluke.com/vtsmartview</a>	

#### Fluke Europe B.V.

P.O. Box 1186  
5602 BD Eindhoven  
The Netherlands  
Web: [www.fluke.co.uk](http://www.fluke.co.uk)

#### For more information call:

In Europe/M-East/Africa  
+31 (0) 40 2 675 200 or  
Fax +31 (0) 40 2 675 222

#### Fluke (UK) Ltd.

52 Hurricane Way  
Norwich, Norfolk  
NR6 6JB  
United Kingdom  
Tel.: +44 (0) 20 7942 0700  
Fax: +44 (0) 20 7942 0701  
E-mail: [industrial@uk.fluke.nl](mailto:industrial@uk.fluke.nl)  
Web: [www.fluke.co.uk](http://www.fluke.co.uk)

©2012-2013 Fluke Corporation.  
All rights reserved. Data subject to alteration without notice. 12/2013 Pub\_ID: 12153-eng

Modification of this document is not permitted without written permission from Fluke Corporation.

## Visual IR Thermometers

# DETECT ISSUES INSTANTLY



VT02

VT04

A troubleshooting tool with an infrared heat map



[www.fluke.co.uk/heatmap](http://www.fluke.co.uk/heatmap)

## SEARCHING FOR TEMPERATURE ISSUES SPOT BY SPOT?

Traditional IR thermometers are designed for only one purpose – detecting single-spot temperature readings.

If you don't know exactly where to look, you can miss a serious problem or waste valuable time searching.



## HOT AND COLD SPOTS CAN'T HIDE ANYMORE

Visual IR thermometers combine the convenience of a point and shoot IR thermometer with the visual insight of an infrared heat map so you can see the complete picture.

## DESIGNED TO SEE IT ALL

Every Fluke Visual IR Thermometer has a built-in digital camera with an infrared heat map overlay to instantly identify the exact location of the problem.



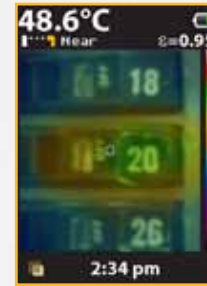
**Center-point temperature (°C/°F)**

**Hot and cold markers**

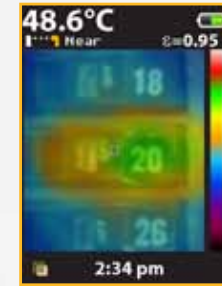
**Digital image for context**

Clearly see that breaker 20 is overloaded and communicate your findings.

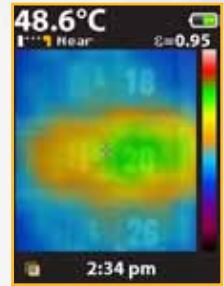
**Infrared heat map overlay**



25 % heat map



50 % heat map



75 % heat map

## GET THE PERFECT FIT FOR YOU

- Fits in your pocket
- Fits your budget – priced to outfit your entire team
- Fits the way you work – get to work as soon as you take it out of the box

