

# WiFi data download from the Fluke 430 Series II Analyzers

## Application Note



### Fluke 430 Series II Analyzers offer the best in power quality and energy analysis

The 434, 435 and 437 Series II models help locate, predict, prevent, and troubleshoot power quality problems in three-phase and single-phase power distribution systems and feature revolutionary power quality and energy measurement functions that are logged on a standard SD memory card.

By adding a Fluke Connect™ wireless SD card\* users can access logged data easier than ever. When operating inside the Fluke 430-II the card behaves like a standard memory card storing the data as it does to the standard card supplied with the Fluke 430-II. Once measurement or logging is stopped and the data is saved the data can then be retrieved directly from the card by using the Wi-Fi connection of your PC or laptop in conjunction with the Fluke PowerLog application software. This ability to support data download by Wi-Fi is only available using PowerLog V4.0 and above, with firmware version 4.0 on the Fluke 430 Series II instrument.

\*Not compatible with the Fluke Connect app at this time.

## Enabling Wi-Fi downloading in PowerLog

### Step one:

To enable downloading by Wi-Fi users can simply change the command that runs the PowerLog program. Once PowerLog is installed the shortcut that starts the program can be edited to enable the Wi-Fi download. To do this first right click on the icon that starts PowerLog and select 'properties,' then select the tab named 'Shortcut' then go to the 'Target' field and add ' -Wi-Fi' to the target behind the last", so it looks like:

**"C:\Program Files (x86)\Fluke\PowerLog\PowerLog.exe" -wifi**

This is the default directory name, it may be different if this was changed during the original installation.

### Step two:

When the Fluke Connect™ wireless SD card is inserted in to the Fluke 430 Series II and powered up the card appears as a Wi-Fi network that your PC or laptop can connect to. Go to your network settings and connect to the network named 'flashair' (the network name will include some specific characters after the network title that are different for each FlashAir Wi-Fi card). It may be necessary to provide a network key for the Wi-Fi SD card, the default setting is '12345678'.

### Step three:

Now start the PowerLog application software from the file menu and select 'FLUKE 430-II Wi-Fi SD card'. Once selected, the dialog in **Figure 2** appears.

On selecting OK, the standard dialog for downloading data from the instrument will start (see **Figure 3**).

It is now possible to select the required data from the instrument for analysis and reporting as you would normally perform with the PowerLog application software.

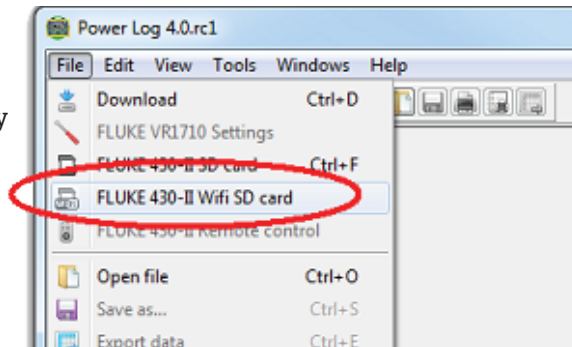


Figure 1: File menu.

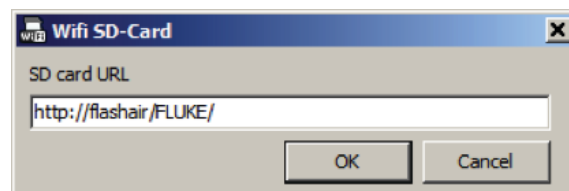


Figure 2: Dialog box that appears after 'FLUKE 430-II Wi-Fi SD card' is selected (see step three).

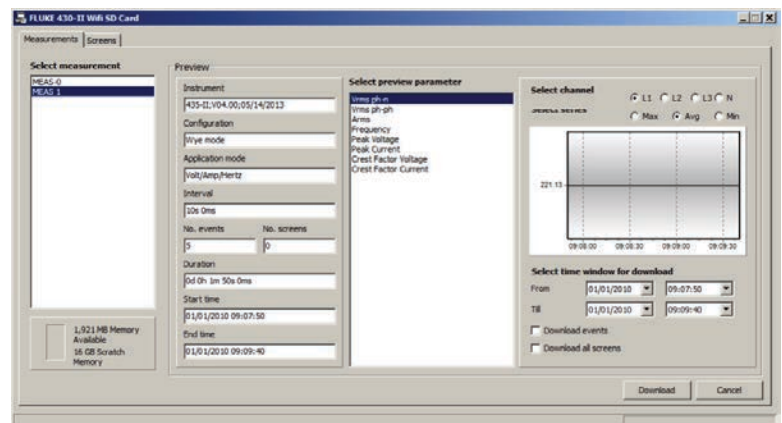


Figure 3: Dialog box that appears after selecting 'OK' in Figure 1 (see step three).

## Important points:

- PowerLog version must be at least V4.0
- Firmware version on the instrument must be at least V4.0
- The instrument must be in HOLD and the data saved in the instrument.
- The computer running PowerLog must be connected to the Fluke Connect™ wireless SD card wireless network.
- Fluke Connect™ wireless SD card should be formatted in the 43X-II prior to initial use.

**Fluke. Keeping your world up and running.®**

**Fluke Corporation**  
PO Box 9090,  
Everett, WA 98206 U.S.A.

**Fluke Europe B.V.**  
PO Box 1186, 5602 BD  
Eindhoven, The Netherlands

### For more information call:

In the U.S.A. (800) 443-5853 or Fax (425) 446-5116  
In Europe/M-East/Africa +31 (0) 40 2675 200 or Fax +31 (0) 40 2675 222  
In Canada (800)-36-FLUKE or Fax (905) 890-6866  
From other countries +1 (425) 446-5500 or Fax +1 (425) 446-5116  
Web access: <http://www.fluke.com>

©2014 Fluke Corporation. Specifications subject to change without notice. All trademarks are the property of their respective owners. Printed in U.S.A. 10/2014 6001686D\_EN

Modification of this document is not permitted without written permission from Fluke Corporation.