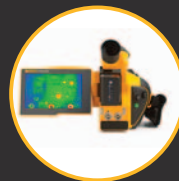


FLUKE®

5

REASONS

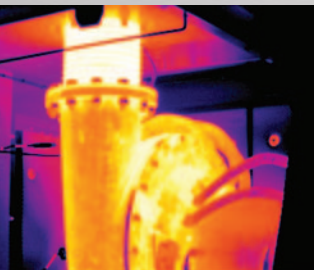
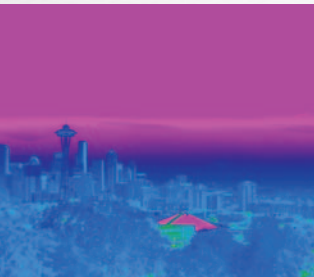
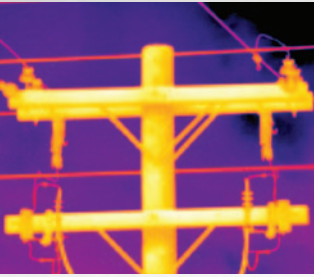
**to choose a Fluke
Infrared Camera**





Superior image quality

Fluke maximizes the performance of every pixel throughout our entire infrared camera portfolio with detector resolutions ranging from 1024x768 to 80x60 and 100 % diamond turned germanium lenses that give you crisp detailed images and more accurate measurements. Get 4 times the resolution in SuperResolution mode and get the image quality you need to make the right diagnosis. Patented IR-Fusion® technology with AutoBlend™ reveals brilliant details and pinpoints the exact location of the problem making your job easier. When you need more detail, optional add-on infrared lenses can make it possible to inspect targets that would be challenging to see with a standard infrared lens due to their size and distance.



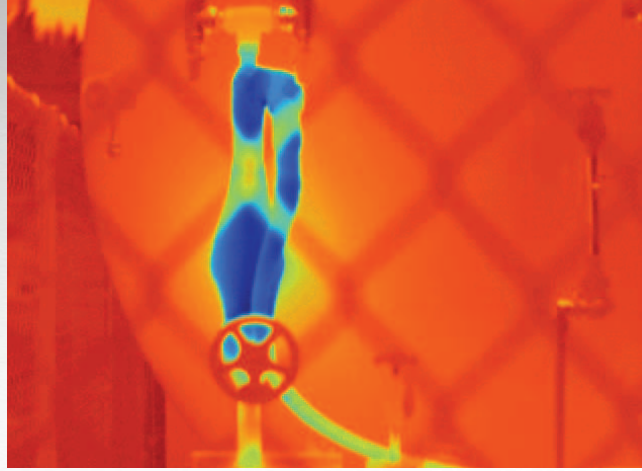


Pushing the boundaries of communication with Fluke Connect®

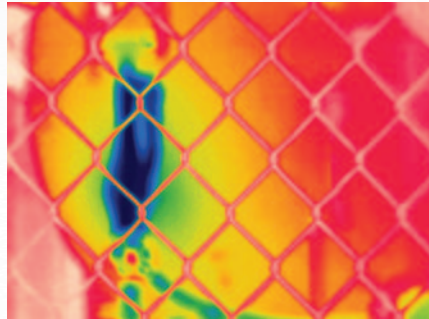
Earning the 2015 product of the year award from Plant Engineering magazine, Fluke Connect is the largest system of connected test tools in the world. Save time—wirelessly sync images directly from your camera to an asset record or work order using the Fluke Connect system. Having access to maintenance records simultaneously at the inspection site and from the office or an off-site location enables faster decision making and real time collaboration between team members.



3



Fluke LaserSharp® Auto Focus captures what you need. Every. Single. Time.



Passive auto focus systems may only capture near-field subject



Difficult inspection sites

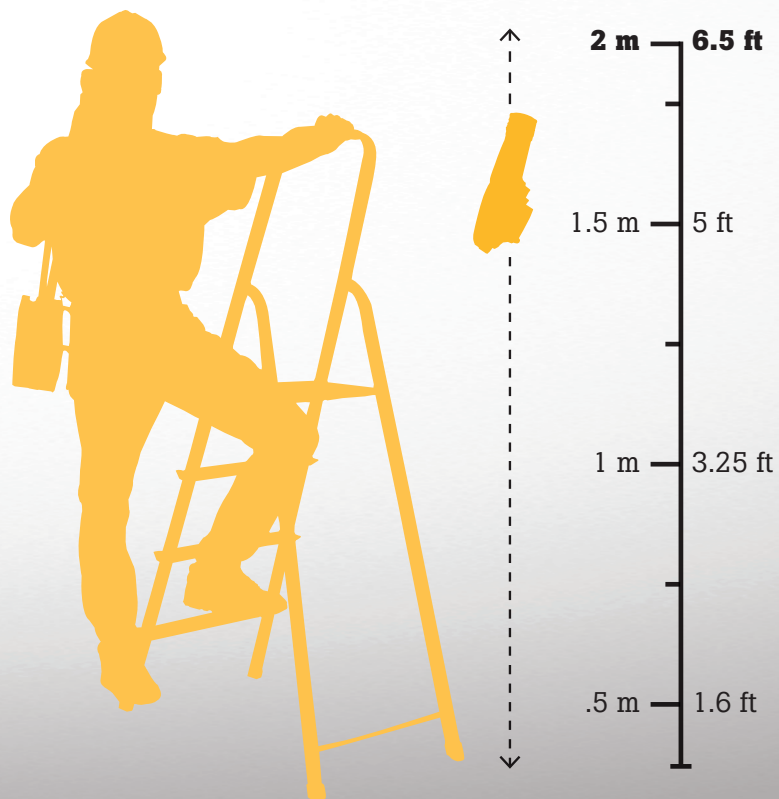
Premier focus technologies

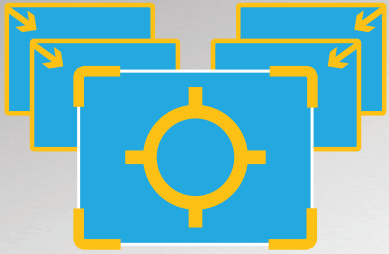
Every infrared camera user knows that if your image is out of focus, temperature measurements could be off by up to 20 degrees or more, making it easier to miss a problem. That's why Fluke engineered LaserSharp® Auto Focus—which uses a built-in laser distance meter to instantly calculate and display the distance to your target so you get an in-focus image with the touch of a button. Or get optimum focus flexibility with your choice of manual or fixed focus ease-of-use.

Capture a clear, accurate image focused throughout the field of view with MultiSharp™ Focus. Simply point and shoot—the camera automatically processes a stack of images focused near and far.

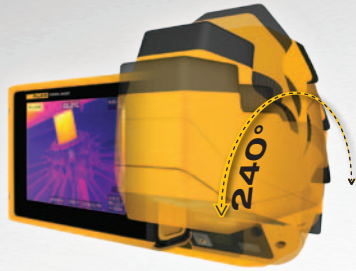
Legendary ruggedness and ease of use

We test our cameras to exceed specifications, so we drop them, soak them, shock them, and shake them for hours on end. Our tools are relentless, built tough to withstand the harsh environments where you work, for years to come. Your job is complicated enough, and the last thing you need is to waste time with a hard to use tool. Our intuitive design with a large user interface allows for quick and easy navigation, making finding and diagnosing problems faster and easier. Not only can you operate a Fluke infrared camera with one hand behind your back, but you may never have to open the operating manual.





MultiSharp™ Focus—simply point and shoot—the camera automatically processes a stack of images focused near and far to give you clear, accurate focus throughout the field of view.



Easily navigate over, under and around objects with the 240° articulating lens and see the image before you capture it.



Turn your 320 x 240 images into 640 x 480 images, that's 4x's the resolution and pixel data with SuperResolution.



With 150 % more viewing area³, easily annotate, edit and analyze images with the largest 5.7 inch touchscreen LCD in its class.¹

Cutting edge innovations

With over 65 years of experience and a line of award winning products, our design team is on the job and in the field for countless hours with our customers to deliver innovations around your applications and how you work. The result—the largest tablet like screen on an IR Camera with a full 180 rotating lens that allows you easily see over, under and around hard to reach objects. HD Resolution with up to 3.1 million pixels gives you brilliant images. A removable smart battery with an LED charge indicator and replaceable SD cards that hold thousands of images along with the ability to create and email reports from the jobsite with Fluke Connect®—saving you both time and money.

**CONTROL
ENGINEERING**

**PLANT
ENGINEERING**

¹Compared to industrial handheld infrared cameras with 320x240 detector resolution as of January 1, 2015.

³Compared to a 3.5 inch screen.

Fluke Infrared Cameras

Industrial, commercial and building use			
Products	Expert Series IR Cameras TiX1000, TiX660, TiX640, TiX620, TiX580, TiX560, TiX520, TiX500	Professional Series IR Cameras Ti480, Ti450, Ti400, Ti300	Performance Series IR Cameras TiS75, TiS65/60, TiS55/50, TiS45/40, TiS20, TiS10
Description	Premium image quality with the highest resolution (up to 1024x768) and best thermal sensitivity	Quality images for advanced inspection and troubleshooting	Easy to use, standard performance with good image quality for everyday use
Applications	The most detailed and challenging inspections/targets <ul style="list-style-type: none"> • Industrial maintenance • Generation/transmission • Oil and gas predictive maintenance • Research and development (electrical, mechanical, biology/sciences, microelectronics) 	<ul style="list-style-type: none"> • Industrial maintenance • Heavy commercial facility maintenance • Oil and gas maintenance • Veterinary • Reliability inspections • Heavy building diagnostics <ul style="list-style-type: none"> - Building envelope - Construction defects • Electrical, water, gas utilities 	<ul style="list-style-type: none"> • Electrical inspections • HVAC/R inspections • Mechanical • Residential home inspections • Light commercial maintenance • Building diagnostics <ul style="list-style-type: none"> - Building envelope - Commercial/industrial facilities
Perfect for	Engineers, R&D professionals and advanced thermographers who require premium image quality and an unsurpassed level of detail in every infrared image.	Professional in-house, contract and service thermographers who need quality images and advanced features and specifications for use in multiple applications.	Technicians and contractors who need quality images and feature rich affordability for quick scans and/or intermittent inspections.
Fluke innovations	<ul style="list-style-type: none"> • 1024 x 768 Resolution • SuperResolution mode • A full 180° articulating lens • Largest 5.7 inch tablet like screen • MultiSharp™ Focus • LaserSharp® Auto Focus • Built-in laser distance meter • Create and email reports directly from the jobsite with the Fluke Connect® app* • IR-Fusion® AutoBlend, Picture-in-Picture • Fluke Connect® SmartView® Software 	<ul style="list-style-type: none"> • SuperResolution mode • MultiSharp™ Focus • LaserSharp® Auto Focus • Built-in laser distance meter • Create and email reports directly from the jobsite with the Fluke Connect® app • IR-Fusion® AutoBlend, Picture-in-Picture • Fluke Connect® SmartView® Software 	<ul style="list-style-type: none"> • Wireless connectivity with the Fluke Connect® app • IR-Fusion® AutoBlend, Picture-in-Picture • Fluke Connect® SmartView® Software
Key features	<ul style="list-style-type: none"> • Premium image quality • High temperature measurement (up to 1200 °C) • Subwindowing • Fastest, highest performance • Save and share measurements from the field with your team anytime, from anywhere. • Instantly capture an in-focus image with the touch of a button • Infinite storage capability due to interchangeable SD cards—each holds thousands of images • Built-in voice recording and annotation • Streaming video • Optional 2x and 4x telephoto, wide angle and macro lenses** • Remote control and operation • Field replaceable, easy release battery with charge indicator to prevent unexpected power loss • Ergonomic design • Fully radiometric • Windows based navigation menu 	<ul style="list-style-type: none"> • Excellent image quality • High temperature measurement (up to 1200 °C) • Save and share measurements from the field with your team anytime, from anywhere. • Instantly capture an in-focus image with the touch of a button • Infinite storage capability due to interchangeable SD cards—each holds thousands of images • Large 3.5 inch touchscreen LCD • Built-in voice recording and annotation • Streaming video • Optional 2x and 4x telephoto and wide angle lenses** • Remote control and operation • Field replaceable, easy release battery with charge indicator to prevent unexpected power loss • Rugged, ergonomic design • Fully radiometric • Windows based navigation menu 	<ul style="list-style-type: none"> • Good image quality • Save and share measurements from the field with your team anytime, from anywhere. • Easy to use, point and shoot or manual focus options • Infinite storage capability due to interchangeable SD cards—each holds thousands of images • Large 3.5 inch LCD • Built-in voice recording and annotation • Streaming video • Field replaceable, easy release battery with charge indicator to prevent unexpected power loss • Rugged, ergonomic design • Fully radiometric • Windows based navigation menu

Specifications vary by model

*Fluke Connect not available with TiX1000, TiX660, TiX640 or TiX620

**May not be available on all models.

FLUKE®



The tools of choice

Experience. Performance. Confidence.

To find out which Fluke infrared camera is right for you, or to locate a distributor in your area, call us between the hours of 8 a.m. and 5 p.m. CT. at:

1.800.760.4523 (U.S.) or 1.800.363.5853 (Canada)

