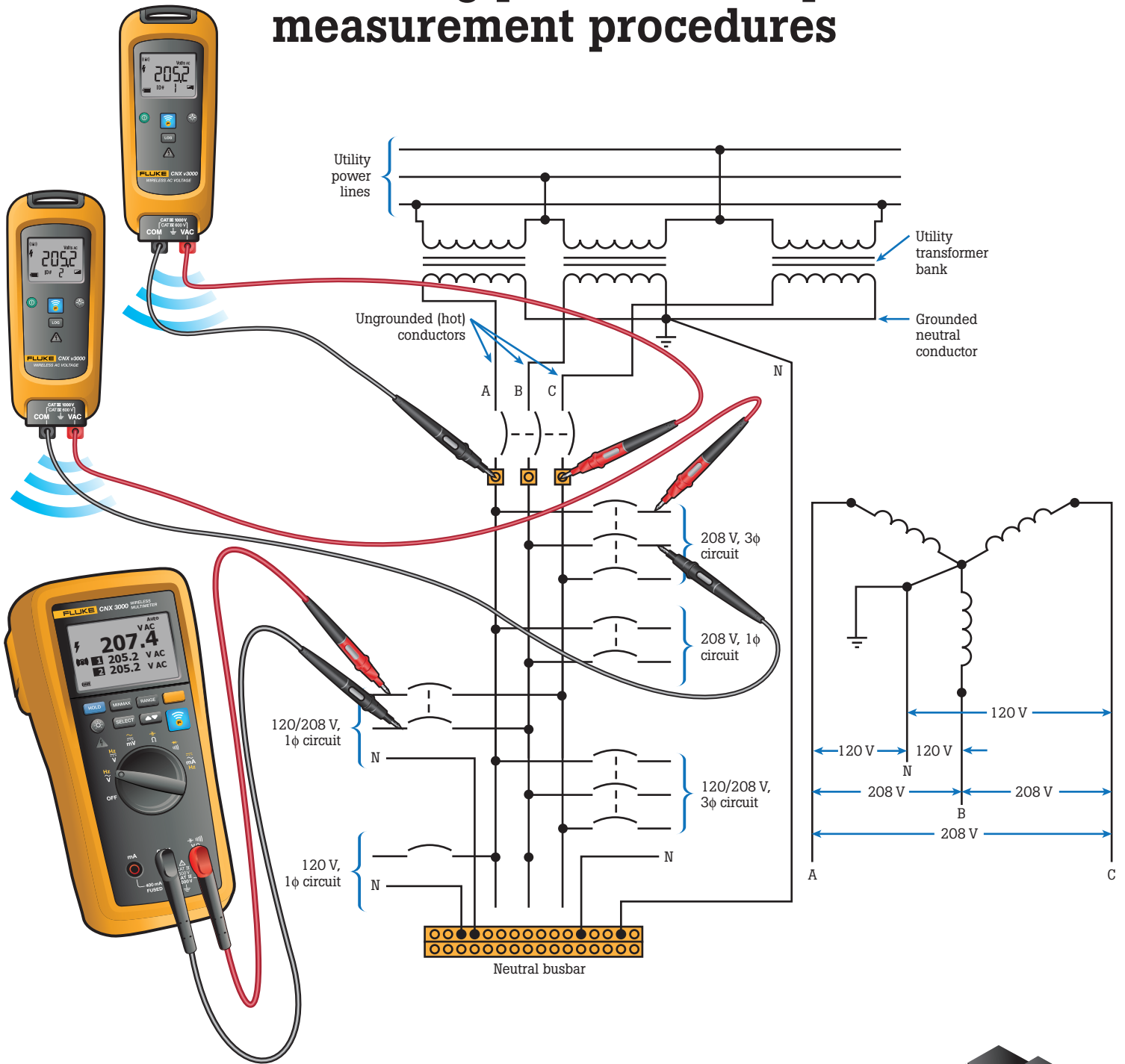


# Detecting power interruption – measurement procedures



A to N  
B to N  
C to N



Single-Pole (SP)  
or 1-Pole

**115 V, 1φ  
general-purpose circuits**

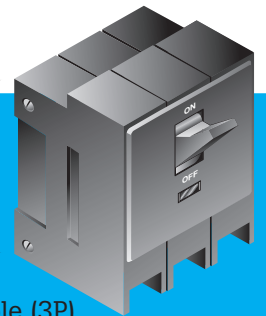
A to B  
B to C  
C to A



Double-Pole (DP)  
or 2-Pole

**208 V, 1φ  
lighting and power circuits**

A to B  
to C



Double-Pole (3P)  
or 3-Pole

**208 V, 3φ  
circuits**