

# VT04 and VT02 Visual IR Thermometers

## Technical Data

### Detect issues instantly!

Fluke Visual IR Thermometers combine the convenience of a spot thermometer with the visual advantage of an infrared heat map, creating a new tool category.

- Detect issues instantly with built-in digital camera
- No training required
- Pocket-size design
- Breakthrough affordability

### Designed to see it all

Every Fluke Visual IR Thermometer has a built-in digital camera with an infrared heat map overlay to instantly identify the exact location of the problem.



**Center-point temperature (°C/°F)**

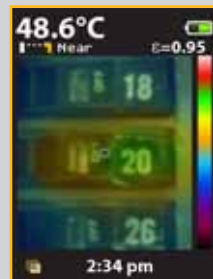
**Hot and cold markers**

**Digital image for context**

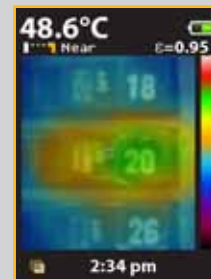
Clearly see that breaker 20 is overloaded and communicate your findings.



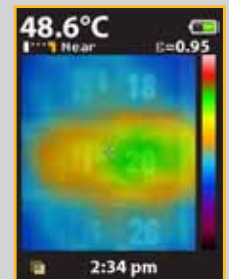
**Infrared heat map overlay**



25 % heat map



50 % heat map



75 % heat map

**Key features of a visual IR thermometer:**

**Fits your budget**

Fluke visual IR thermometers give you bold temperature features at a price that allows you to outfit your entire team.

**Built-in digital camera**

Every Fluke visual IR thermometer has a built-in digital camera.

**Infrared heat map overlay**

Blend a digital image with a heat map overlay to instantly show the exact location of the issue. Blend between 0%, 25%, 50%, 75%, and full infrared with one button.

**No expensive training required**

Get to work as soon as you take it out of the box.

**Pocket-size design**

Handy when you need it—easily fits in your tool bag or pocket.

**SmartView® reporting software**

Store up to 10,000 images per GB on included SD card and make reports with Fluke's professional reporting software, available through free download at [www.fluke.com/vtsmartview](http://www.fluke.com/vtsmartview).

**Center-point temperature and hot and cold markers**

Hot and cold markers automatically identify hottest and coldest spots within field of view.

**The Fluke VT04 additionally offers:**

**Powerful resolution with PyroBlend™ Plus optics**

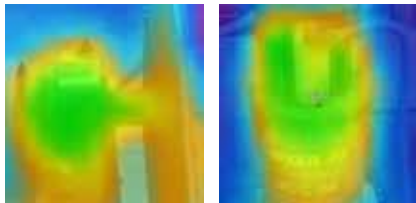
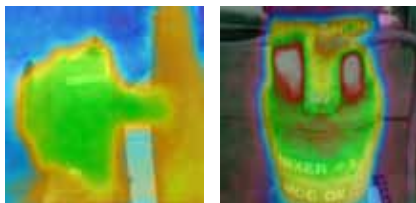
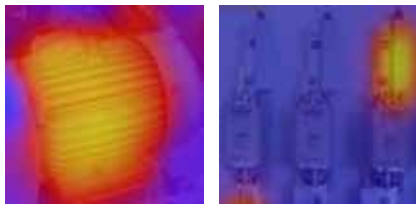
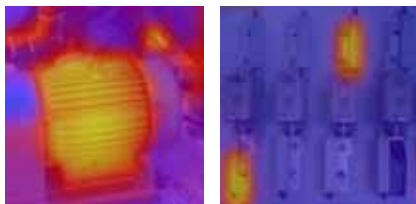
- **Excellent field of view for tight spaces:**  
28° x 28°
- **Four times sharper images than VT02**

**Alarm and time lapse features**

- **High/low temperature alarms**—high and low temperature alarms flash whenever the temperature threshold is exceeded
- **Time lapse image capture**—automatically capture images at set intervals of time without being there
- **Auto-Monitor alarm**—automatically capture images after a user-selected temperature threshold has been exceeded

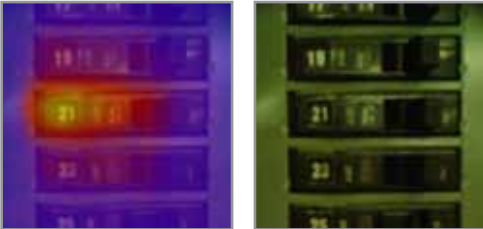


## Specifications

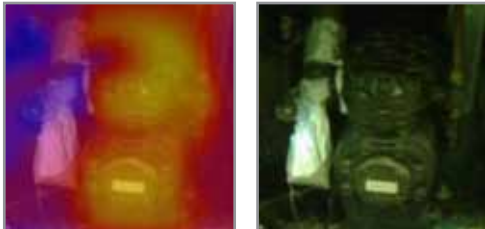
Key features	VT02	VT04
Built-in digital camera	Yes	
Infrared heat map overlay	Yes, five blending modes	
Image optics system	PyroBlend™ optic 	PyroBlend™ Plus optic 4x sharper image than VT02 
Field of view	20° x 20° 	28° x 28° 
High/low temperature alarms	—	Yes
Time lapse image capture	—	Yes
Auto-Monitor alarm	—	Yes
Battery type	Four (4) AA batteries	Li-Ion rechargeable
Training	No training required	
Ergonomics	Slim pocket-sized design	
Hot and cold markers	Yes	
<b>General specifications</b>		
Battery life	Eight (8) hours	
Temperature measurement range	-10 °C to +250 °C	
Temperature measurement accuracy	± 2 °C or ± 2 %	
Temperature measurement	Yes, center-point	
Storage medium (micro SD card)	Stores up to 10,000 images per GB (4 GB card included)	
Infrared spectral band	6.5 μm to 14 μm	
Level and span	Auto	
Focus mechanism	Focus free, no training required with built-in intelligence	
Focus options—exclusive user selectable NEAR/FAR options	NEAR <23 cm; FAR >23 cm	
Dimensions	21 cm x 7.5 cm x 5.5 cm	
Weight	385 g	350 g
File format	.is2 format saved to SD card. User can create professional reports or export images in SmartView® (BMP, DIB, GIF, JPE, JFIF, JPEG, JPG, PNG, TIF and TIFF); go to Fluke website to download software free	
Safety and compliance	CFR47: 2009 Class A. Part 15 subpart B; CE: EN 61326:2006; IEC/EN 61010-1:2010	
Warranty	Two-years	

**Key applications**

**Overloaded breakers**



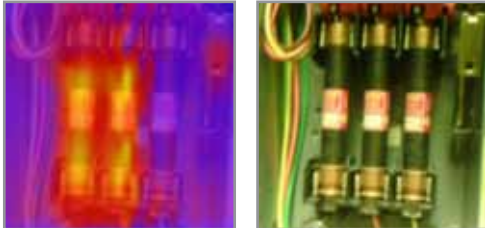
**Compressor heat expansion valves**



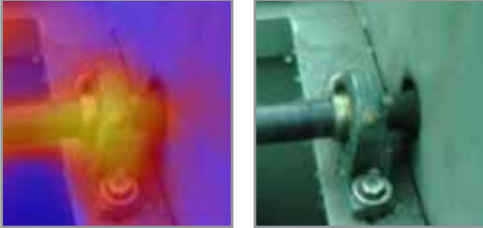
**Overheating motor**



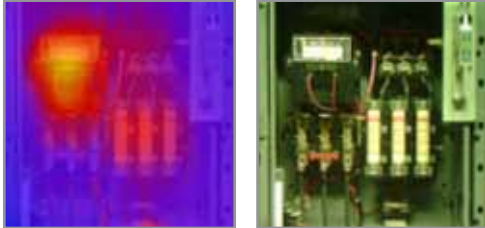
**Unbalanced three phase supply**



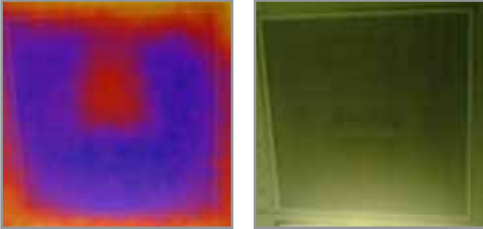
**Overheating bearings**



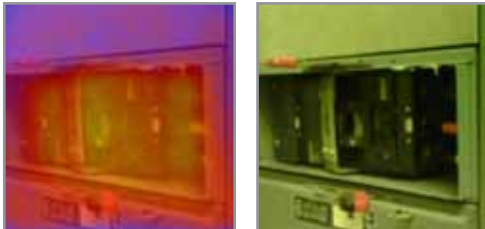
**Combination starter**



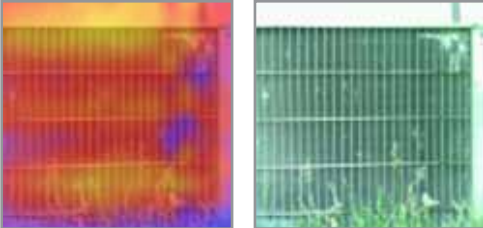
**Faulty air damper**



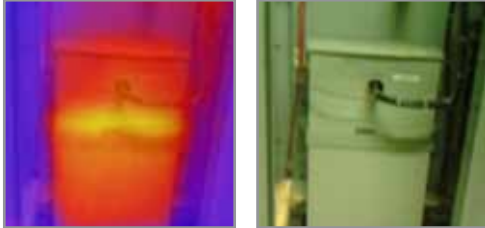
**Normal operating temperature on mission critical breaker**



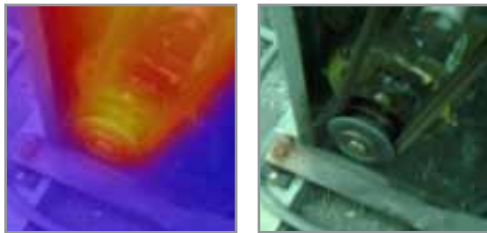
**Abnormal heat patterns in an AC condenser**



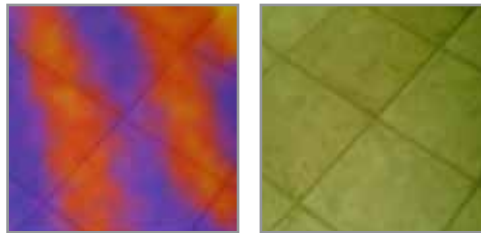
**Power factor correction capacitors**



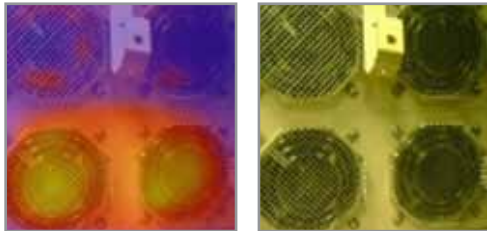
**Overheating pulley and belts**



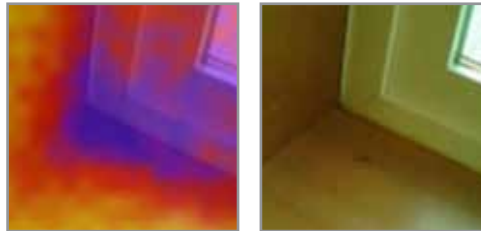
**Hydronic and radiant flooring**



**Fans for high-powered equipment**



**Potential heat loss from doors and windows**



**Ordering information**

**FLK-VT04** VT04 Visual IR Thermometer

**FLK-VT02** VT02 Visual IR Thermometer

**Included with product\***

**VT04:** includes a hard case, micro SD card and adapter, a lithium ion rechargeable battery, and micro USB charger/power supply (including worldwide adapters).

**VT02:** includes a soft case, micro SD card and adapter, and 4 AA batteries.

Both models include printed quick start guides in English, Spanish, German, French and Simplified Chinese; other languages are available to download from the Fluke website at [www.fluke.com/vtquickstart](http://www.fluke.com/vtquickstart). The users manual (in multiple languages) and SmartView® software (18 languages) are available for download from the Fluke website at [www.fluke.com/vtmanual](http://www.fluke.com/vtmanual) and [www.fluke.com/vtsmartview](http://www.fluke.com/vtsmartview).

**Optional**

**FLK-VT04-CHARGER** Charger for VT04

**FLK-VT04-BATTERY** Replacement Battery for VT04

**FLK-VT-HARD CASE** Hard Case for VT02 and VT04 Visual IR Thermometers

**C90** Soft Case for DMMs and VT02 and VT04 Visual IR Thermometers

**Save money with Fluke kits:**

**FLK-VT04-MAINT-KIT** Includes a VT04 Visual IR Thermometer and a 1507 Insulation Multimeter

**FLK-VT04-HVAC-KIT** Includes a VT04 Visual IR Thermometer, 902 True-rms HVAC Clamp Meter and a 116 Digital Multimeter.

**FLK-VT04-ELEC-KIT** Includes a VT04 Visual IR Thermometer, a 117 Electricians Multimeter and a 376 AC/DC True-rms Clamp Meter

\*The following accessories have been removed from the visual IR thermometer packaging; lanyard, hard carrying case (still included with VT04), SmartView® and owner's manual CDs (available for download from the Fluke website).

**Fluke Europe B.V.**  
P.O. Box 1186  
5602 BD Eindhoven  
The Netherlands  
Web: [www.fluke.co.uk](http://www.fluke.co.uk)

**For more information call:**  
In Europe/M-East/Africa  
+31 (0) 40 2 675 200 or  
Fax +31 (0) 40 2 675 222

**Fluke (UK) Ltd.**  
52 Hurricane Way  
Norwich, Norfolk  
NR6 6JB  
United Kingdom  
Tel.: +44 (0) 20 7942 0700  
Fax: +44 (0) 20 7942 0701  
E-mail: [industrial@uk.fluke.nl](mailto:industrial@uk.fluke.nl)  
Web: [www.fluke.co.uk](http://www.fluke.co.uk)

©2013 Fluke Corporation.  
All rights reserved. Data subject to alteration without notice. 12/2013 Pub\_ID: 12152-eng

**Modification of this document is not permitted without written permission from Fluke Corporation.**