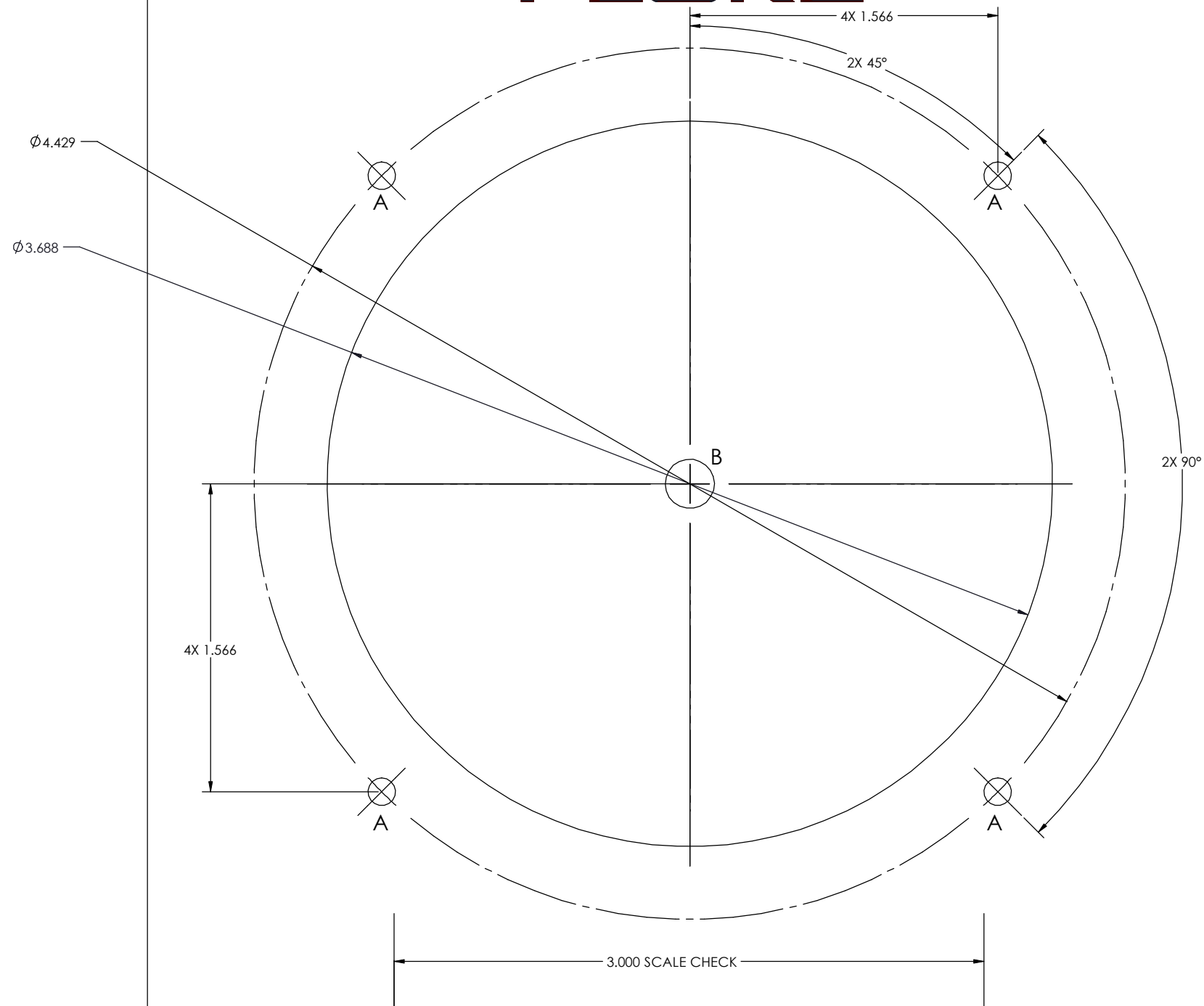


HOLE A - 3.7mm (9/64")
HOLE B - 6mm (1/4") THEN ENLARGE TO 93mm (3 11/16")

100mm (4") DRILLING TEMPLATE

FLUKE



IMPORTANT
CHECK BEHIND BEFORE DRILLING

| | |
|-------------------------------------|--|
| FLUKE | FLUKE CORPORATION P.O. BOX 9090 EVERETT, WA 98206-9090 |
| 100mm (4") DRILLING TEMPLATE | |
| TECHNICAL SUPPORT: 1-800-760-4523 | |