

B Program Start

At the first program start, you will be asked to:

- Set language and country
- Set the serial interface
- Set company (name/logo)

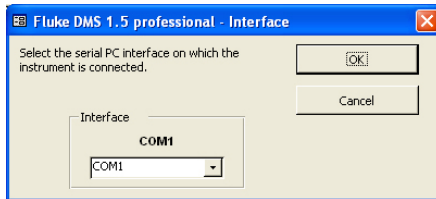
The Help (User Manual) function requires that you have Adobe Acrobat Reader installed on your computer. For a free download, go to www.Adobe.com.

To access the Users Manual, go to ? > **Help**. Or, press the **F1** key on the computer keyboard. The User Manual opens in the language for the selected setup.

C Set the serial interface

1. Install the software for the USB-IR Driver and connect the adapter cable. See separate instructions.
2. In DMS software, select **Settings > Serial Interface** and then select the serial interface used for the data transmission from the test instrument in the "COM" input window.

For example, select **COM 1** and click **OK** to confirm.



License Agreement

BY USING THIS SOFTWARE PRODUCT IN ANY MANNER, YOU ARE AGREEING TO ACCEPT THE FOLLOWING TERMS AND CONDITIONS.

Fluke Corporation (Fluke) grants you a non-exclusive right to use Fluke DMS Software (Product) on a single PC or workstation (node), or on multiple nodes, provided that a multi-use license is obtained from Fluke and the number of nodes does not exceed the number of nodes for which license fees are paid. This grant of license does not include the right to copy, modify, rent, lease, sell, transfer or distribute the Product or any portion thereof. You may not reverse engineer, decompile, or disassemble the Product.

Fluke warrants that the Product will perform in its intended environment substantially in accordance with the accompanying written materials for a period of 90 days from the date of license acceptance. Fluke does not warrant any downloading errors or that the Product will be error free or operate without interruption.

FLUKE DISCLAIMS ALL OTHER WARRANTIES, EITHER EXPRESS OR IMPLIED, BUT NOT LIMITED TO IMPLIED WARRANTIES OF MERCHANTABILITY AND FITNESS FOR A PARTICULAR PURPOSE, WITH RESPECT TO THE SOFTWARE AND THE ACCOMPANYING WRITTEN MATERIALS. In no event shall Fluke be liable for any damages whatsoever (including, without limitation, indirect, consequential, or incidental damages, damages for loss of business profits, business interruption, loss of business information, or other pecuniary loss) arising out of the use of or inability to use this Product, even if Fluke has been advised of the possibility of such damages.

Quick Start Guide

FLUKE®

DMS Software

DMS COMP
DMS COMP/PROF



Consult user documentation

- Go to www.fluke.com to register your product and find more information.
- To view, print, or download the latest manual or supplement, visit us.fluke.com/user/support/manuals.

System Requirements

Processor	Pentium® 4 or higher with support of all customary operating systems
Operating system	Microsoft Windows® XP, Windows® 7, Windows® 8, Windows® 8.1, and Windows® 10
Memory	256 MB RAM
Hard drive memory	400 MB
Monitor	Super VGA (800 x 600).
Drive	CD-ROM/DVD
Input device	Mouse or compatible
Interface	RS-232 for data transmission. USB by means of optional adapter cable (USB - RS-232).

The screenshot shows the 'Client' form in the Fluke DMS 1.5 professional software. The form is divided into several sections: a top navigation bar with 'Client', 'Certificate/Test', 'Distribution', and 'current circuit'; a 'Client' dropdown menu; and a main form area with the following fields:

Name:	(E0) Sample Company	Client code:	400
Client No.:	SA300	Remarks:	Demonstration data record
Contact:	Mr. Miller		
Phone:	01234-56789-0		
Mobile phone:	0123-9876543		
Fax:	01234-56789-99		
Email:	info@samplecustomer.xxx		
Company:	Sample customer		
Location:			
Street:	12 Oak Park		
Post code:	12345		
City:	Any Place		

Caution

Before the installation of the Fluke DMS software, restart Windows or end all running application programs (also programs working in the background, such as virus scanners).

1. Insert the DVD into the computer drive.

The SETUP.EXE program starts automatically when the CD-ROM is inserted.

If the program does not start automatically, start Windows Explorer and select the DVD drive. Select the SETUP.EXE file with Explorer. Double-click to start the installation.

2. At the prompt, select the installation language (English, German, French, or Dutch).

The sub-folders DATA and BACKUP are created in the installation folder. The database FDMSPRO1x.MDB is in the DATA sub-folder. The transmission protocols are also in the DATA folder.

3. Use **Settings > Directories** to set up the DATA folder.

If this folder is not set up, the application uses the DATA sub-folder. Data is backed up in the BACKUP sub-folder. All backup copies of the transmission protocols and the backup of the database are saved to this folder. If no folder is entered, the application uses the BACKUP sub-folder.

The Access Run Time Module must be installed on your computer. Supported versions are Access 2002 Run Time, Access 2003 Run Time, Access 2007 Run Time, and Access 2010 Run Time. The recommended version is Access 2010 Run Time. You can install Access 2010 Run Time when you install DMS.

If you choose to install Access 2010 Run Time, click Close when the DMS Software installation is complete. The corresponding language version installs and the context menus and error messages show in this language. Depending on the Operating System, you may also be asked to restart the computer after the installation of Access 2010 Run Time is complete.

Kit Contents

- DVD with Fluke DMS Software (includes Users Manual)
- Quick Start Guide
- IR-USB interface cable for use with 0100/INST
- USB cable for use with 0702/PAT
- Mini CD with USB-IR Driver
- USB Cable Installation Guide