

Flash Upgrade Quick Guide

FLUKE®

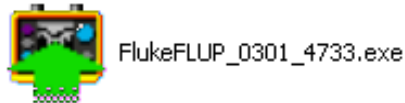
Model : 345 and 1735
Date : 2008-11-13
Rev : C
Support File : How to use the upgrade tool for 345

How to upgrade your Fluke 345 or 1735 instrument firmware

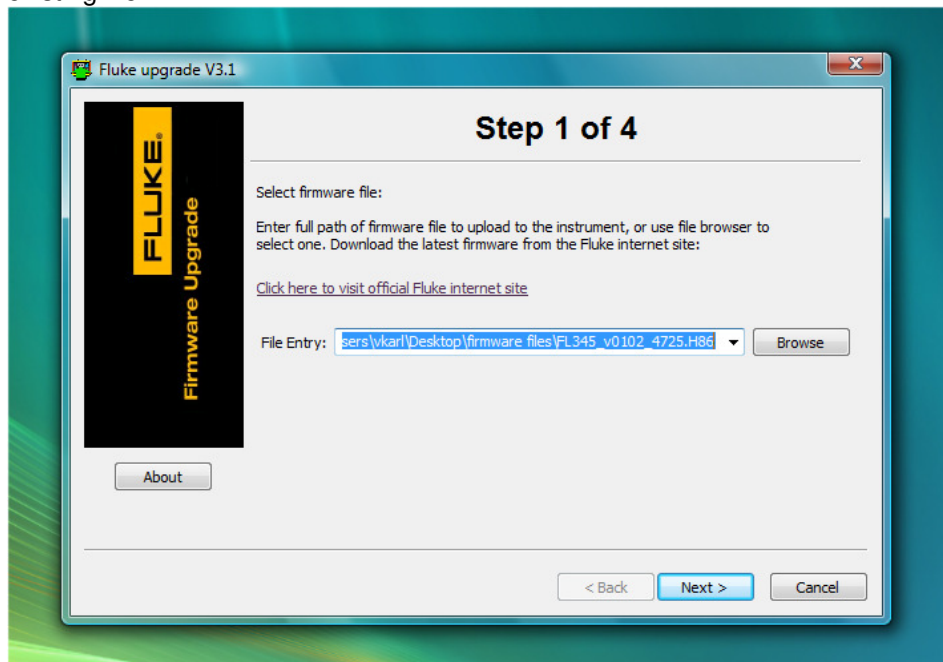
1. **Download the upgrade tool** and the firmware file from the Fluke webpage and save it on your PC.



2. **Run the upgrade tool** by double click on the exe file – it is no longer required to run setup to use this tool. Connect your Fluke 1735 instrument to mains supply using the provided power adaptor. Follow the instructions on screen.



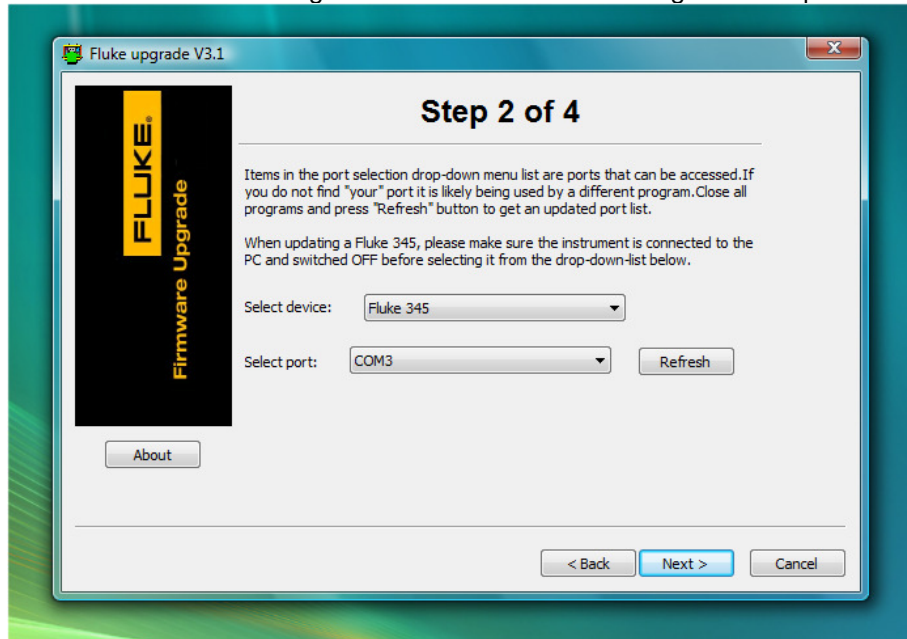
- Step 1** Select the downloaded firmware file – use the “Browse” button to locate it. Then click “Next>”. The “Next>” button becomes enabled only if the file entry field leads to an existing file.



Manual appendix

Step 2 Connect your Fluke 345 instrument to a USB port on your PC. Select “Fluke 345” from the device selection drop-down list. The upgrade wizard will automatically find the correct COM port. Please note that this will only work if the instruments USB drivers have been correctly installed.

Automatic COM port number detection can be restarted at any time simply by selecting “Fluke 345” from the list again. Click next once the settings are completed.

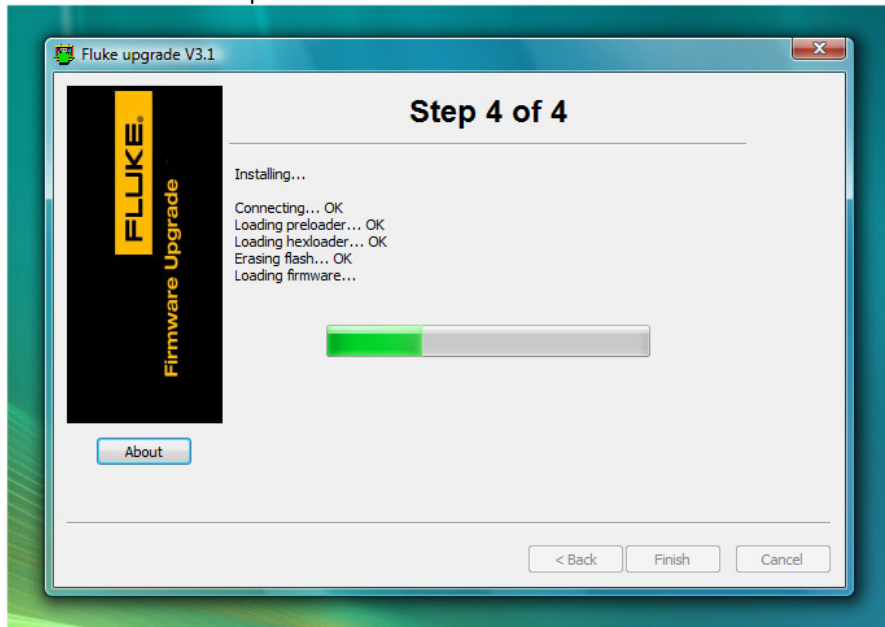


Step 3 Put the instrument into “boot mode” as indicated on screen. Then click “Install” to start the firmware upgrade.



Manual appendix

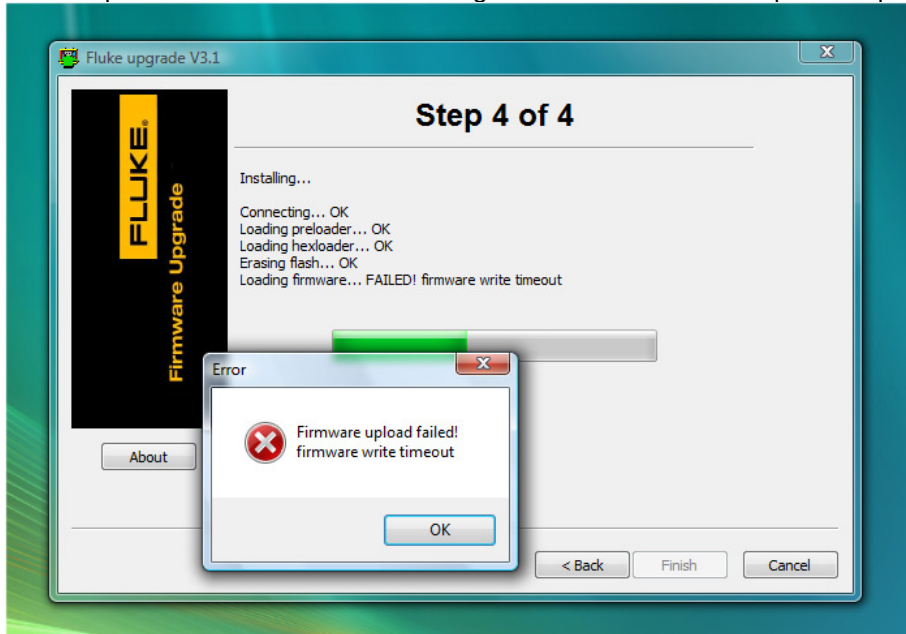
Step 4 Installing the new firmware on the instrument. Please do not interrupt the firmware installation process.



Step 5 Disconnect your instrument from the PC but leave it connected to a power supply, switch it off and then on again. Wait for the splash screens to disappear and the instrument to start displaying measurement results. Do not turn off while the unit displays a splash screen – on a 1735 this usually takes approximately 10 seconds.

Manual appendix

- 3. Errors?** If there are any problems while running the upgrade tool – e.g. like the one displayed below – please confirm the error message and click “<Back” to repeat the procedure (Step 3).



In case the tool has issues during the connection phase please try to use a different PC (especially if you are using a laptop computer please try using a desktop PC instead).

Are there any further problems please contact your local Fluke support!