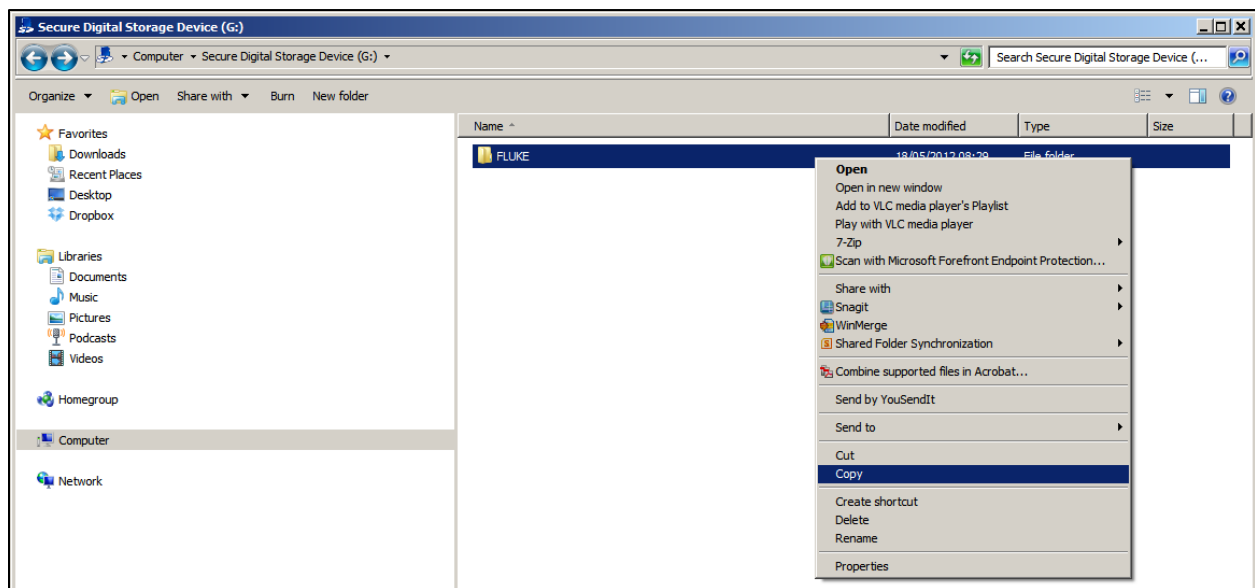


Backing Up and Copying Data from the Fluke 430-II SD Card

The fastest way of getting data from your Fluke 430-II for analysis is by accessing it directly from the SD card. This document gives some suggestions about some good ways of ensuring that your data is easily accessible and safely backed up.

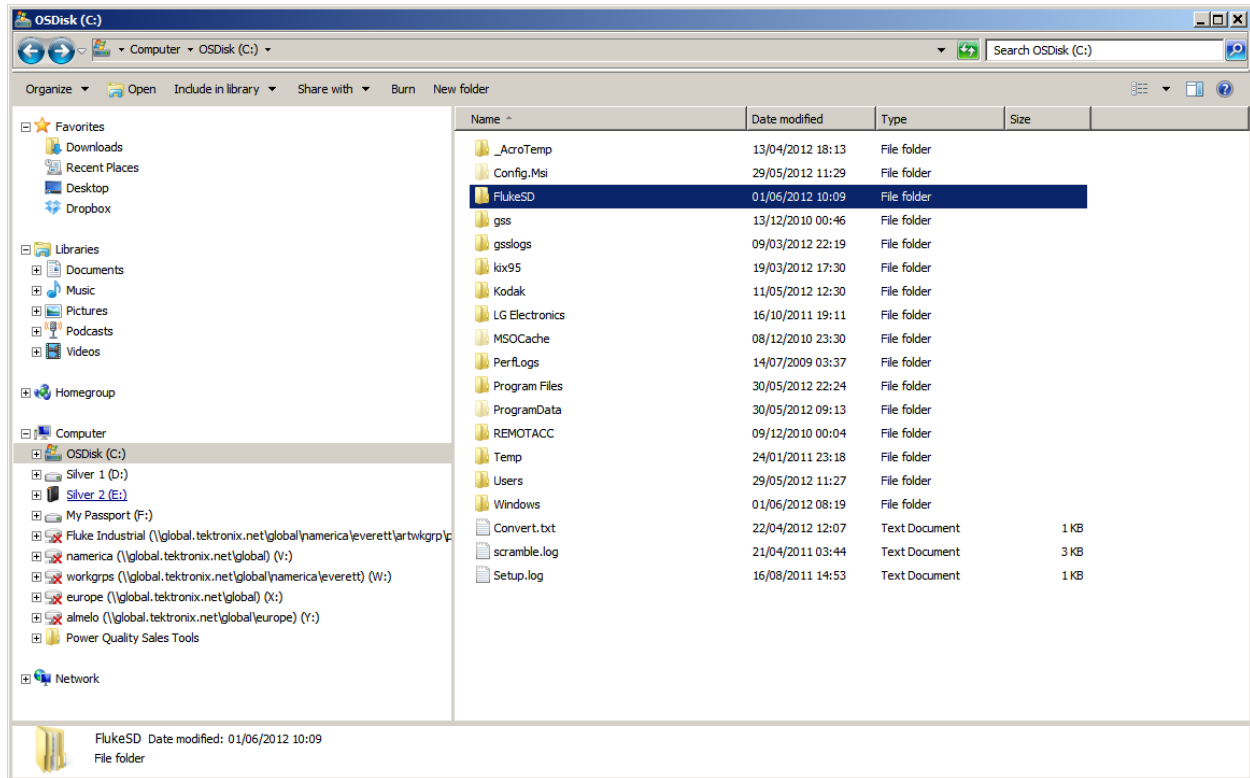
Firstly, follow the instructions detailed in the Fluke 430-II operators manual for removal of the SD card.

Insert the SD card either into the SD card slot of your computer or use an SD card reader. The SD card will appear as a new drive on your computer.



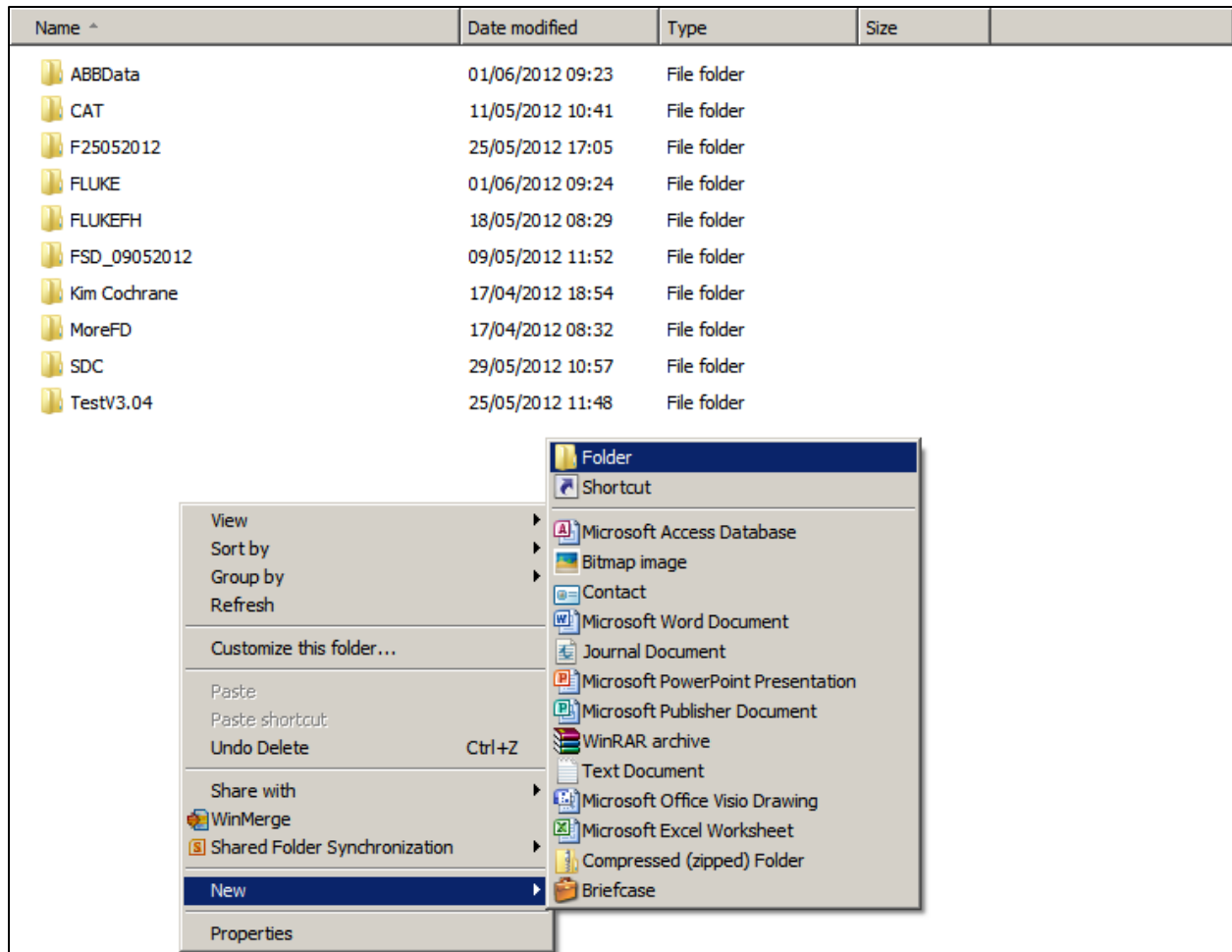
Right click on the directory called FLUKE that appears on the right hand side of the Windows Explorer window, click on COPY.

To store this to an easily accessible location we suggest creating a directory on your C: Drive with the name FlukeSD:



Inside this folder create subfolders that indicate to you where the contents of the SD card came from

Right click in the right-hand side window to create a new directory; in this example FCTest will be created:

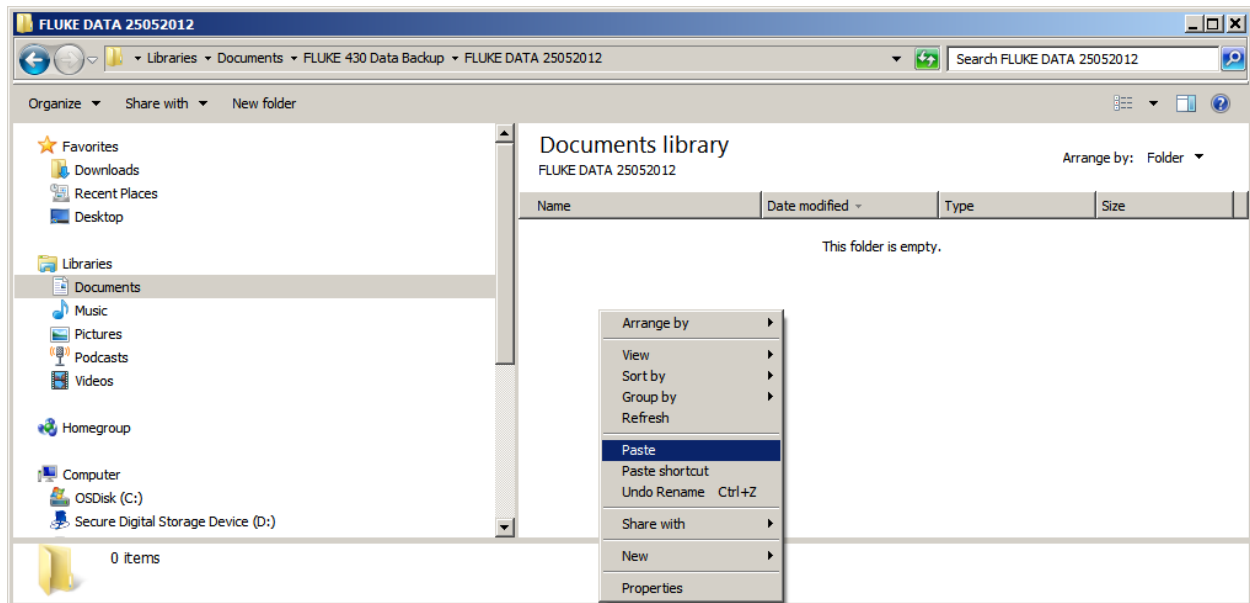


The one named FDTest is highlighted:

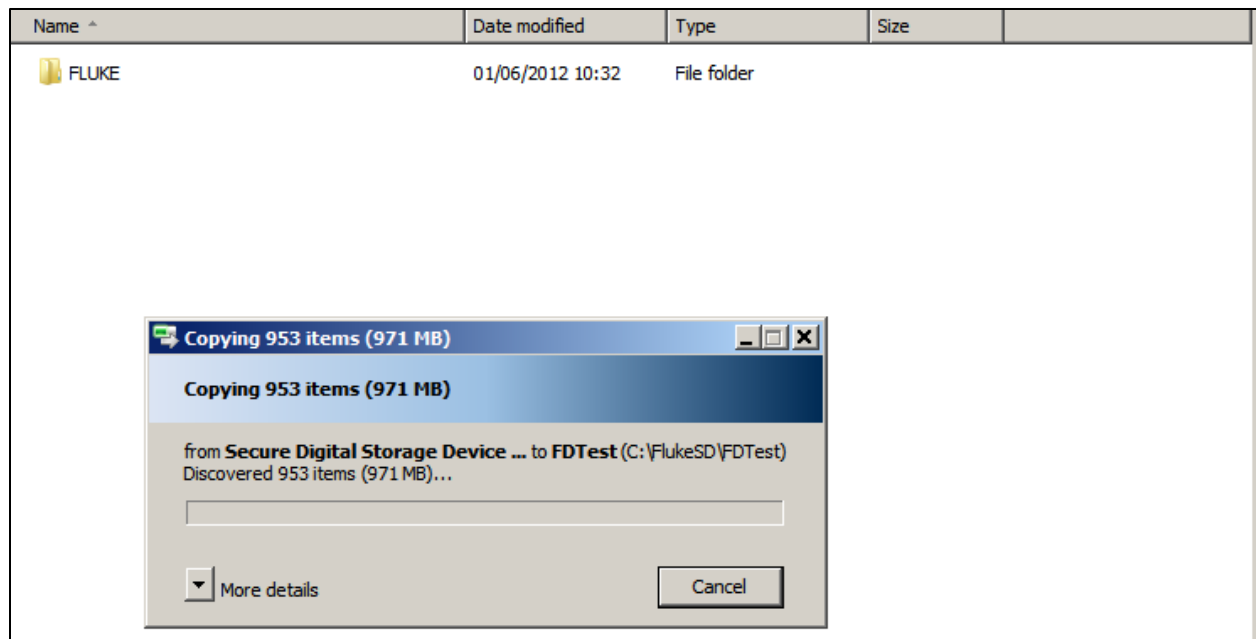
Name ^	Date modified	Type	Size
ABBDData	01/06/2012 09:23	File folder	
CAT	11/05/2012 10:41	File folder	
F25052012	25/05/2012 17:05	File folder	
FDTest	01/06/2012 10:23	File folder	
FLUKE	01/06/2012 09:24	File folder	
FLUKEFH	18/05/2012 08:29	File folder	
FSD_09052012	09/05/2012 11:52	File folder	
Kim Cochrane	17/04/2012 18:54	File folder	
MoreFD	17/04/2012 08:32	File folder	
SDC	29/05/2012 10:57	File folder	
TestV3.04	25/05/2012 11:48	File folder	

Double click on the directory.

Double click on the folder, right click and select Paste:



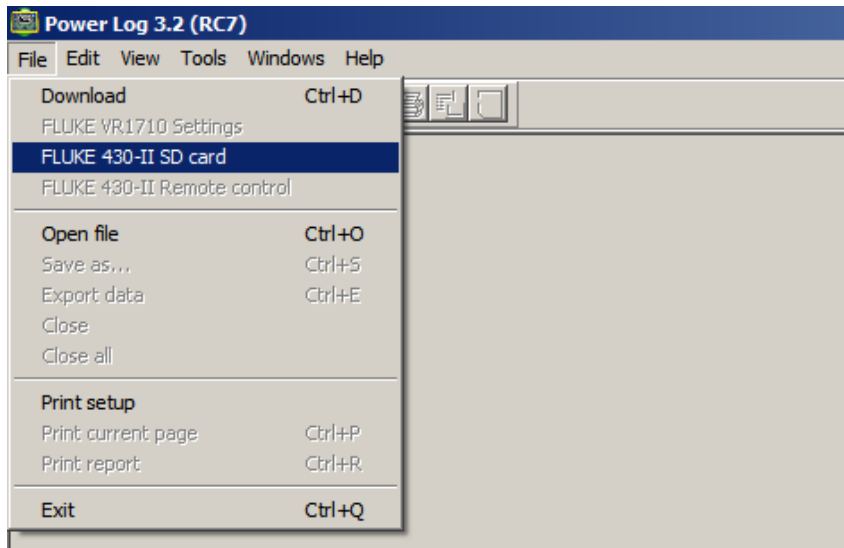
The FLUKE directory will now be copied in the directory:



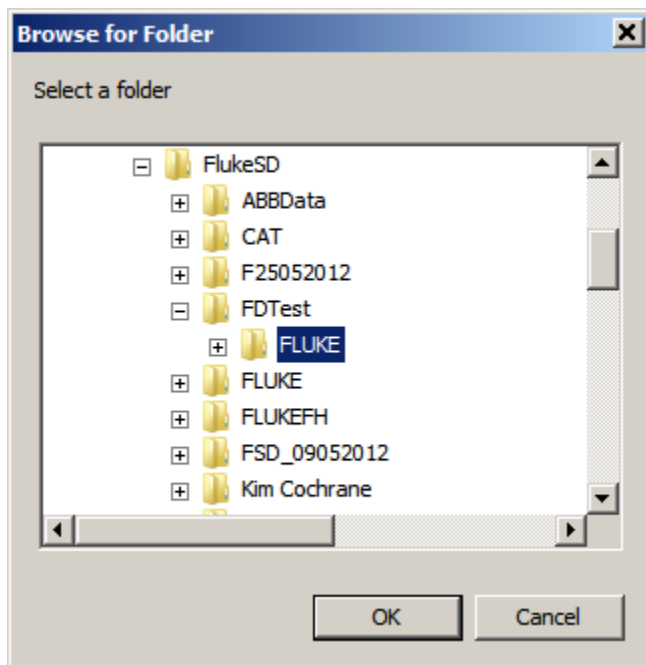
The time to copy the data across will depending on how much data is in the directory.

The data in this directory can now be accessed directly from the PowerLog application software.

To access the data select FLUKE 430-II SD card from the File menu.



Select the location of the folder name FLUKE you previously copied:



When the SD card is inserted in to the Fluke 430-II the instrument automatically creates a directory named FLUKE which contains a number of subdirectories where the collected data is stored. This data is stored in specific locations that the PowerLog software understands, changing these locations can corrupt the data making it unreadable.

In our example we chose the save directory as being FlukeSD on the C: drive to ensure directory names remain short. Windows XP and 7 have some limitations as to the allowable name length, creating these short names eliminates the risk of creating names that are too long.