

Instructions for Fluke 810 Vibration Tester Firmware Update

For the Fluke 810 firmware update, the first step is to confirm the Board Support Package (BSP) version on your tester.

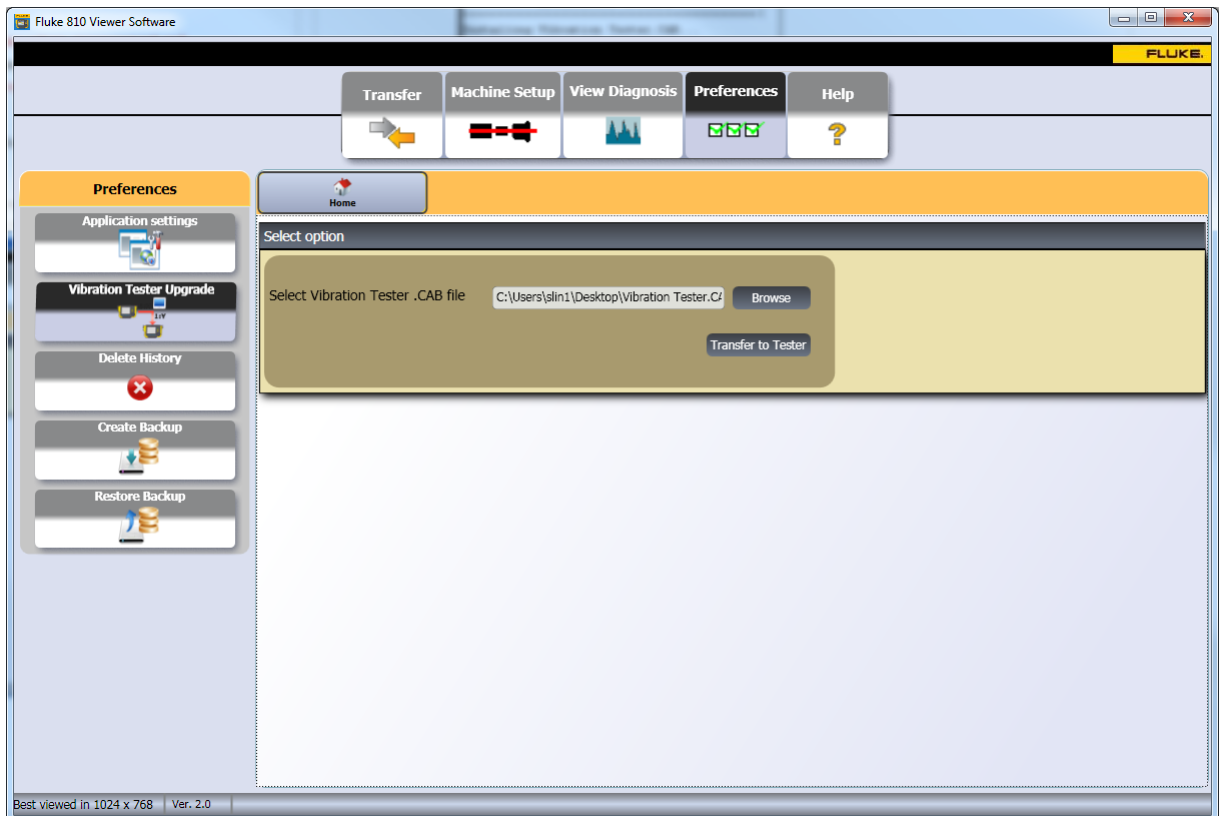
Confirm the BSP Version

1. Power up the Tester and press the Instrument Setup button.
2. Select “Settings” menu.
3. Press F2 [Next Page] until you arrive at the final page of the Instrument Setup.
4. Note the BSP version indicated on the display.

If the BSP version is 6.06.07, updating the firmware will erase all machine setups, measurement and diagnostic history. Skip to the section on page 3 titled: “Firmware Upgrade Instructions if BSP version is 6.06.07 or less” for instructions on how to update firmware.

Firmware Upgrade Instructions if BSP version is 6.06.08 or greater

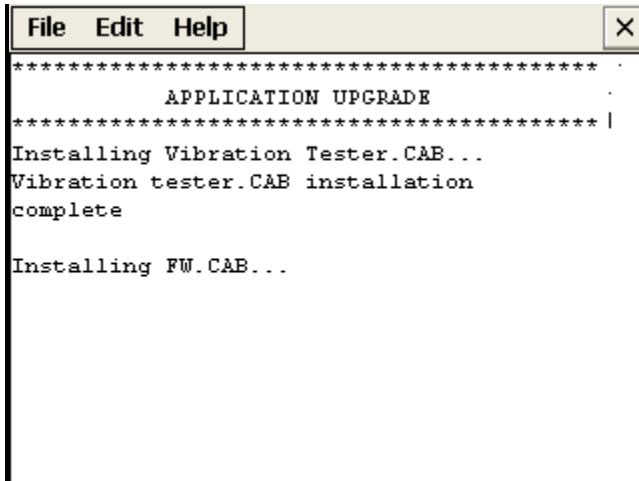
1. Startup the Fluke 810 Viewer application and click on “Preferences” Tab.
2. Click on “Vibration Tester Upgrade” from the menu on the left, second button down.
3. Browse to locate the “Vibration Tester.CAB” file for the latest firmware version in your PC.
4. Click “Transfer to Tester” button. The Viewer Software will start transferring the .CAB file to the Tester.



5. Upon completion of the file transfer, restart the Tester.
IMPORTANT: Do not restart Tester before transfer is complete. Wait for dialog box indicating the transfer is complete.

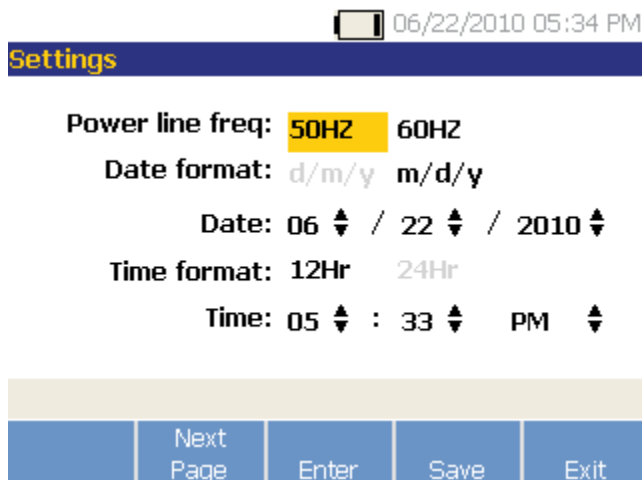
6. After restarting the Tester, WAIT UNTIL INSTALLATION IS COMPLETE. (The following screen will be displayed on the Tester).

Note that if the database is in the old format, it might take the upgrade process a few minutes longer on the Fluke logo screen. DO NOT turn off the Tester while updating.



7. The firmware installation will finish on the Instrument Setup Screen. At this point, your firmware upgrade is complete. Review, change and save the settings based upon your preferences.

Important: Please make sure that correct AC power line frequency is selected for your region.



8. Firmware Upgrade is complete.

Firmware Upgrade Instructions if BSP version is 6.06.07 or less

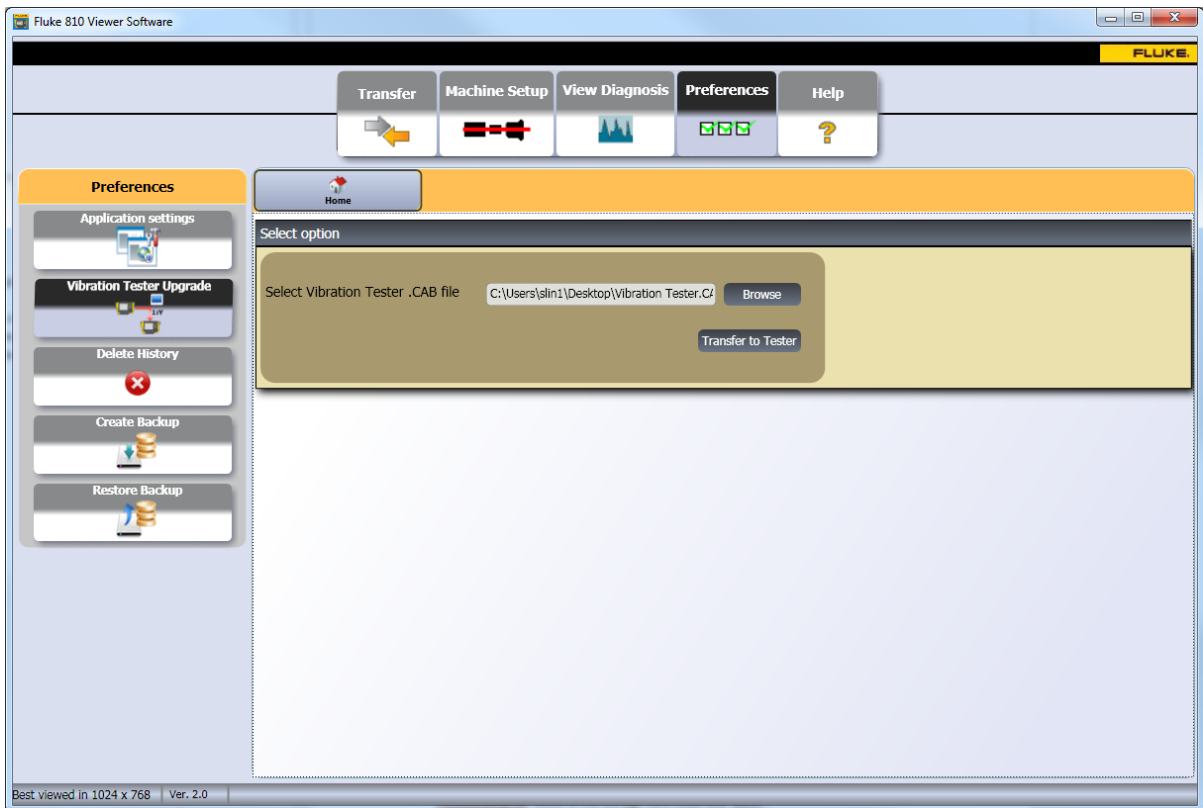
If BSP is 6.06.07 or less, you must copy your database in the Tester so you can restore it after the firmware upgrade. If you don't need to restore the data currently on the Tester, skip to "Firmware Update".

Database Backup:

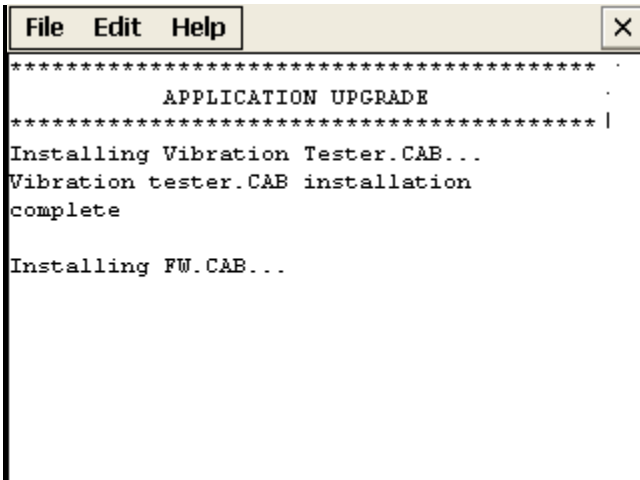
1. First plug the Tester into your computer.
2. Go to My computer on your desktop PC or to Windows Explorer and select Mobile Device.
3. Browse to "\Storage Card" folder on Mobile Device.
4. There will a file named "Flukedatadog.sdf" in this folder. This database holds all of your machine setups and diagnostic data.
5. Copy that file to your computer.

Firmware Update:

6. Once the backup is complete, startup the Fluke 810 Viewer application and click on "Preferences" Tab.
7. Click on "Vibration Tester Upgrade" from the menu on the left, second button down.
8. Browse to locate the "Vibration Tester.CAB" file for the latest firmware version in your PC.
9. Click "Transfer to Tester". Viewer Software will start transferring the .CAB file to the Tester.

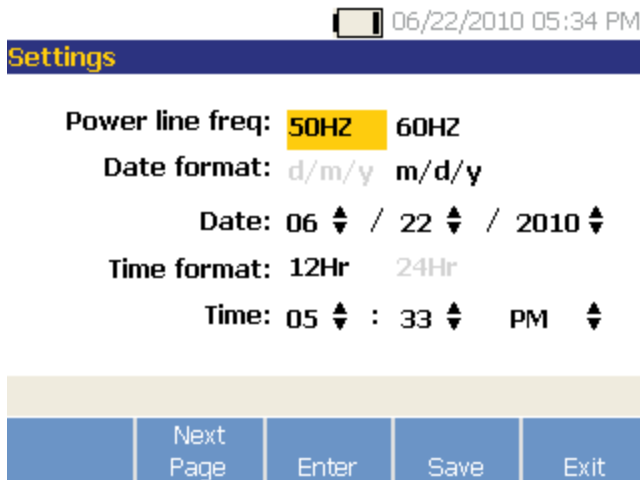


10. Upon completion of the file transfer, restart the Tester.
IMPORTANT: Do not restart Tester before transfer is complete. Wait for dialog box indicating the transfer is complete.
11. After restarting the Tester, WAIT UNTIL INSTALLATION IS COMPLETE. (The following screen will be displayed on the Tester).
Note that if the database is in the old format, it might take the upgrade process a few minutes longer on the Fluke logo screen. DO NOT turn off the Tester while updating.



12. The firmware installation will finish on the Instrument Setup Screen as shown below. At this point, your firmware upgrade is complete. Review, change and save the settings based upon your preferences.

Important: Please make sure that correct AC power line frequency is selected for your region.



Once the firmware upgrade is complete, the database files stored on your PC can be restored.

Restoring Database:

13. There will be a file named "Flukedatadog.sdf" in the "\Storage Card" folder. Rename this file with any other name, e.g. 'Flukedatadog2.sdf'
Note: If file is locked, on the Tester, exit to the main screen.
14. Copy the file "FlukeDataDog.sdf" from the location on your computer, where you saved it, to the "\Storage Card" folder. This file can't be dragged over to the Mobile Device. Right click and 'copy' Flukedatadog.sdf. Move to the Storage Card folder and 'paste'.
15. Delete the renamed file e.g. "FlukeDataDog2.sdf".
16. Restart the Tester.
Note that if the database is in the old format, it might take the upgrade process a few minutes longer on the Fluke logo screen. DO NOT turn off the Tester while updating.
18. Firmware Upgrade is complete.